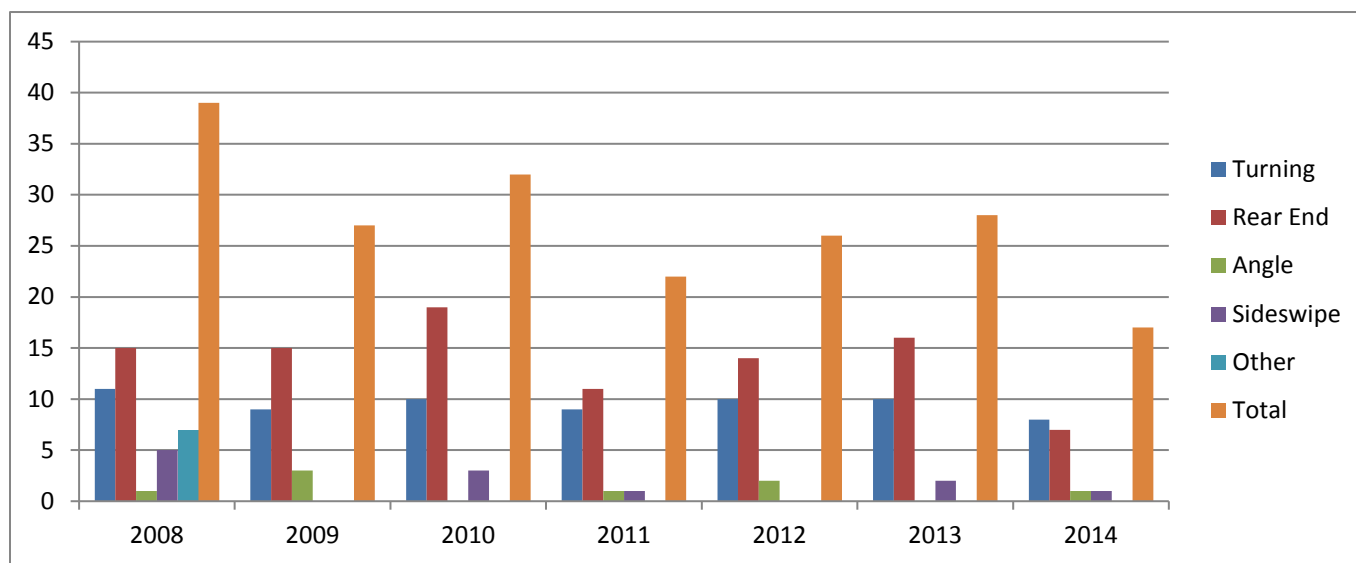


25th Ave and North Ave
<East, West and Southbound>

**RLR Crash Data
and Analysis**

The table and chart below show a summary of motor vehicle crashes at the intersection of 25th Ave and North Ave over a span of 7 years. The data from 2008-2009 show the period prior to the installation of RLR cameras. The data from 2010 show the year in which the cameras were installed. The data from 2011-2014 show the period following the installation.

	Turning	Rear End	Angle	Sideswipe	Other	Total
2008	11	15	1	5	7	39
2009	9	15	3	0	0	27
2010	10	19	0	3	0	32
2011	9	11	1	1	0	22
2012	10	14	2	0	0	26
2013	10	16	0	2	0	28
2014	8	7	1	1	0	17



In 2010 the Average Daily Traffic (ADT) volume along 25th Ave fluctuated between 14,400 and 24,900 cars at the intersection of 25th Ave and North Ave. The ADT along North Ave reached 51,200 cars, according to IDOT.

By 2012 there was a slight decrease in ADT along 25th Ave (between 16,100 and 17,700). There was an increase in ADT along North Ave at the same location (52,800 and 53,600).

By 2014 the ADT along 25th Ave increased slightly (17,800 and 18,400). Traffic volume on North Ave decreased to 50,400.

At the intersection of 25th Ave and North Ave there were 39 accidents in 2008, 27 in 2009, 32 in 2010, 22 in 2011, 26 in 2012, 28 in 2013 and 17 in 2014.

Collision Diagram

1/1/2014 to 12/31/2014

Crash Route: IL064 | From MileStation 126.15 to 126.15 | County : Cook | Intersection Related: Intersections | *See Notes at End of Report.

Date	Weather	Roadway	----- A	Injuries B	----- C	Killed	Type of Crash	Light Condition	Mile	Vehicle Type	DIRP	Maneuver	Event 1	Loc 1	Event 2	Loc 2	Event 3	Loc 3	Unit
20140008152																			
1/15/2014 11:20 AM	Clear	Dry	0	0	0	0	Rear End	Daylight	126.15	SUV	West	Slow/Stop In Traffic	Motor Vehicle In Traffic	On Pavement (Roadway)	(UNK)	(UNK)	(UNK)	(UNK)	1
										Other	West	Slow/Stop In Traffic	Motor Vehicle In Traffic	On Pavement (Roadway)	(UNK)	(UNK)	(UNK)	(UNK)	2
201400080813																			
1/18/2014 6:05 AM	Unknown	Wet	0	0	0	0	Rear End	Dawn	126.15	Van/Mini-Van	West	Slow/Stop In Traffic	Motor Vehicle In Traffic	On Pavement (Roadway)	(UNK)	(UNK)	(UNK)	(UNK)	2
										Unknown	West	Unknown	Motor Vehicle In Traffic	On Pavement (Roadway)	(UNK)	(UNK)	(UNK)	(UNK)	1
201400018536																			
2/10/2014 6:25 AM	Clear	Dry	0	0	1	0	Turning	Daylight	126.15	Passenger	North	Turning Right	Motor Vehicle In Traffic	Other	(UNK)	(UNK)	(UNK)	(UNK)	1
										Bus Over 15 Passengers	East	Straight Ahead	Motor Vehicle In Traffic	Other	(UNK)	(UNK)	(UNK)	(UNK)	2
201400022748																			
2/14/2014 1:45 PM	Clear	Dry	0	0	0	0	Sideswipe Same Direction	Daylight	126.15	Motorcycle (Over 150cc)	South	Changing Lanes	Motor Vehicle In Traffic	On Pavement (Roadway)	(UNK)	(UNK)	(UNK)	(UNK)	1
										Bus Up to 15 Passengers	South	Slow/Stop In Traffic	Motor Vehicle In Traffic	On Pavement (Roadway)	(UNK)	(UNK)	(UNK)	(UNK)	2
201400128202																			
2/28/2014 10:24 PM	Clear	Dry	0	0	0	0	Rear End	Darkness/ Lighted Road	126.15	Passenger	West	Straight Ahead	Motor Vehicle In Traffic	On Pavement (Roadway)	(UNK)	(UNK)	(UNK)	(UNK)	1
										Passenger	West	Straight Ahead	Motor Vehicle In Traffic	On Pavement (Roadway)	(UNK)	(UNK)	(UNK)	(UNK)	2
201400209721																			
4/9/2014 3:25 PM	Clear	Dry	0	0	0	0	Turning	Daylight	126.15	Passenger	South	Slow/Stop In Traffic	Motor Vehicle In Traffic	On Pavement (Roadway)	(UNK)	(UNK)	(UNK)	(UNK)	2

Collision Diagram

1/1/2014 to 12/31/2014

Crash Route: IL064 | From MileStation 126.15 to 126.15 | County : Cook | Intersection Related: Intersections | *See Notes at End of Report.

Date	Weather	Roadway	----- A	Injuries B	----- C	Killed	Type of Crash	Light Condition	Mile	Vehicle Type	DIRP	Maneuver	Event 1	Loc 1	Event 2	Loc 2	Event 3	Loc 3	Unit
										Passenger	North	Turning Left	Motor Vehicle In Traffic	On Pavement (Roadway)	(UNK)	(UNK)	(UNK)	(UNK)	1
201400228046																			
4/24/2014 4:42 PM	Clear	Dry	0	1	0	0	Turning	Daylight	126.15										
										Passenger	Unknown	Straight Ahead	Motor Vehicle In Traffic	Intersection	(UNK)	(UNK)	(UNK)	(UNK)	1
										Passenger	Southwest	Turning Left	Motor Vehicle In Traffic	Intersection	(UNK)	(UNK)	(UNK)	(UNK)	2
201400260337																			
5/16/2014 6:50 PM	Clear	Unknown	0	0	0	0	Rear End	Unknown	126.15										
										Unknown	Unknown	Slow/Stop In Traffic	Motor Vehicle In Traffic	On Pavement (Roadway)	(UNK)	(UNK)	(UNK)	(UNK)	1
										SUV	Unknown	Slow/Stop In Traffic	Motor Vehicle In Traffic	On Pavement (Roadway)	(UNK)	(UNK)	(UNK)	(UNK)	2
201400272932																			
6/2/2014 4:18 PM	Clear	Dry	0	0	0	0	Turning	Daylight	126.15										
										Passenger	Southeast	Turning Left	Motor Vehicle In Traffic	Intersection	(UNK)	(UNK)	(UNK)	(UNK)	1
										Passenger	North	Straight Ahead	Motor Vehicle In Traffic	Intersection	(UNK)	(UNK)	(UNK)	(UNK)	2
201400058875																			
6/3/2014 6:34 AM	Clear	Dry	0	0	1	0	Rear End	Daylight	126.15										
										Pickup	West	Slow/Stop In Traffic	Motor Vehicle In Traffic	Intersection	(UNK)	(UNK)	(UNK)	(UNK)	1
										Truck Single Unit	West	Slow/Stop In Traffic	Motor Vehicle In Traffic	Intersection	(UNK)	(UNK)	(UNK)	(UNK)	2
201400330167																			
6/24/2014 11:10 AM	Clear	Dry	0	0	0	0	Rear End	Daylight	126.15										
										SUV	West	Straight Ahead	Motor Vehicle In Traffic	On Pavement (Roadway)	(UNK)	(UNK)	(UNK)	(UNK)	1
										Passenger	West	Slow/Stop In Traffic	Motor Vehicle In Traffic	On Pavement (Roadway)	(UNK)	(UNK)	(UNK)	(UNK)	2

Collision Diagram

1/1/2014 to 12/31/2014

Crash Route: IL064 | From MileStation 126.15 to 126.15 | County : Cook | Intersection Related: Intersections | *See Notes at End of Report.

Date	Weather	Roadway	----- A	Injuries B	----- C	Killed	Type of Crash	Light Condition	Mile	Vehicle Type	DIRP	Maneuver	Event 1	Loc 1	Event 2	Loc 2	Event 3	Loc 3	Unit
201400119898																			
7/21/2014 2:13 PM	Clear	Dry	0	0	1	0	Rear End	Daylight	126.15	Passenger	West	Straight Ahead	Motor Vehicle In Traffic	On Pavement (Roadway)	(UNK)	(UNK)	(UNK)	(UNK)	1
										Pickup	West	Slow/Stop In Traffic	Motor Vehicle In Traffic	On Pavement (Roadway)	(UNK)	(UNK)	(UNK)	(UNK)	2
201400173870																			
8/22/2014 7:15 AM	Cloudy/Overcast	Wet	0	0	1	0	Turning	Daylight	126.15	Passenger	South	Straight Ahead	Motor Vehicle In Traffic	On Pavement (Roadway)	(UNK)	(UNK)	(UNK)	(UNK)	1
										Passenger	West	Turning Left	Motor Vehicle In Traffic	Off Pavement - Right	(UNK)	(UNK)	(UNK)	(UNK)	2
										Passenger	East	Slow/Stop In Traffic	Motor Vehicle In Traffic	On Pavement (Roadway)	(UNK)	(UNK)	(UNK)	(UNK)	3
201400244909																			
10/3/2014 10:10 AM	Clear	Dry	0	1	0	0	Turning	Daylight	126.15	SUV	Northeast	Turning Left	Motor Vehicle In Traffic	On Pavement (Roadway)	(UNK)	(UNK)	(UNK)	(UNK)	1
										Passenger	West	Straight Ahead	Motor Vehicle In Traffic	On Pavement (Roadway)	(UNK)	(UNK)	(UNK)	(UNK)	2
201400293205																			
11/14/2014 4:35 PM	Clear	Dry	0	0	0	0	Turning	Darkness/ Lighted Road	126.15	Passenger	Southeast	Turning Left	Motor Vehicle In Traffic	On Pavement (Roadway)	(UNK)	(UNK)	(UNK)	(UNK)	1
										Truck Single Unit	East	Straight Ahead	Motor Vehicle In Traffic	On Pavement (Roadway)	(UNK)	(UNK)	(UNK)	(UNK)	2
201400308628																			
11/26/2014 2:41 PM	Clear	Dry	0	0	0	0	Turning	Daylight	126.15	Passenger	West	Turning Left	Motor Vehicle In Traffic	On Pavement (Roadway)	(UNK)	(UNK)	(UNK)	(UNK)	1
										Passenger	South	Straight Ahead	Motor Vehicle In Traffic	On Pavement (Roadway)	(UNK)	(UNK)	(UNK)	(UNK)	2

Collision Diagram

1/1/2014 to 12/31/2014

Crash Route: IL064 | From MileStation 126.15 to 126.15 | County : Cook | Intersection Related: Intersections | *See Notes at End of Report.

Date	Weather	Roadway	----- A	Injuries B	----- C	Killed	Type of Crash	Light Condition	Mile	Vehicle Type	DIRP	Maneuver	Event 1	Loc 1	Event 2	Loc 2	Event 3	Loc 3	Unit
201400311504																			
11/30/2014 11:53 PM	Clear	Dry	0	0	2	0	Angle	Darkness/ Lighted Road	126.15	Passenger	East	Straight Ahead	Motor Vehicle In Traffic	On Pavement (Roadway)	(UNK)	(UNK)	(UNK)	(UNK)	1
										Passenger	North	Straight Ahead	Motor Vehicle In Traffic	On Pavement (Roadway)	(UNK)	(UNK)	(UNK)	(UNK)	2

Collision Diagram

1/1/2014 to 12/31/2014

Crash Route: IL064 | From MileStation 126.15 to 126.15 | County : Cook | Intersection Related: Intersections | *See Notes at End of Report.

TOTAL CRASHES	FATAL CRASHES	A INJURY CRASHES	B INJURY CRASHES	C INJURY CRASHES	PROPERTY DAMAGE CRASHES	TOTAL KILLED	TOTAL INJURED	A INJURIES	B INJURIES	C INJURIES
17	0	0	2	5	10	0	8	0	2	6

Type of Crash	Total	%	Day of Wk	Total	%	Hour of Day	Total	%	Vehicle Type	Total	%
Angle	1	5.9%	Monday	3	17.6%	06 AM	3	17.6%	Bus Over 15 Passengers	1	2.9%
Rear End	7	41.2%	Tuesday	2	11.8%	07 AM	1	5.9%	Bus Up to 15 Passengers	1	2.9%
Sideswipe Same Direction	1	5.9%	Wednesday	3	17.6%	10 AM	1	5.9%	Motorcycle (Over 150cc)	1	2.9%
Turning	8	47.1%	Thursday	1	5.9%	11 AM	2	11.8%	Other	1	2.9%
TOTAL:	17		Friday	6	35.3%	1 PM	1	5.9%	Passenger	20	57.1%
			Saturday	1	5.9%	2 PM	2	11.8%	Pickup	2	5.7%
			Sunday	1	5.9%	3 PM	1	5.9%	SUV	4	11.4%
			TOTAL:	17		4 PM	3	17.6%	Truck Single Unit	2	5.7%
						6 PM	1	5.9%	Unknown	2	5.7%
						10 PM	1	5.9%	Van/Mini-Van	1	2.9%
						11 PM	1	5.9%	TOTAL:	35	
						TOTAL:	17				

Weather Cond	Total	%	Light Cond	Total	%	Road Surface	Total	%	DIRP	Total	%
Clear	15	88.2%	Darkness/ Lighted Road	3	17.6%	Dry	14	82.4%	East	4	11.4%
Cloudy/Overcast	1	5.9%	Dawn	1	5.9%	Unknown	1	5.9%	North	4	11.4%
Unknown	1	5.9%	Daylight	12	70.6%	Wet	2	11.8%	Northeast	1	2.9%
TOTAL:	17		Unknown	1	5.9%	TOTAL:	17		South	5	14.3%
			TOTAL:	17					Southeast	2	5.7%
									Southwest	1	2.9%
									Unknown	3	8.6%

Collision Diagram

1/1/2014 to 12/31/2014

Crash Route: IL064 | From MileStation 126.15 to 126.15 | County : Cook | Intersection Related: Intersections | *See Notes at End of Report.

<i>DIRP</i>	<i>Total</i>	<i>%</i>
West	15	42.9%
TOTAL:	35	



Collision Diagram

1/1/2014 to 12/31/2014

Crash Route: IL064 | From MileStation 126.15 to 126.15 | County : Cook | Intersection Related: Intersections | *See Notes at End of Report.

Notes

Calendar data selections include data based on the date of the crash. Year selections include data based on the Statistical year in which the crash was processed

Collision Diagram

1/1/2013 to 12/31/2013

Crash Route: IL064 | From MileStation 126.15 to 126.15 | County : Cook | Intersection Related: Intersections | *See Notes at End of Report.

Date	Weather	Roadway	----- A	Injuries B	----- C	Killed	Type of Crash	Light Condition	Mile	Vehicle Type	DIRP	Maneuver	Event 1	Loc 1	Event 2	Loc 2	Event 3	Loc 3	Unit
201301051227																			
1/18/2013 9:22 AM	Clear	Dry	0	0	0	0	Turning	Daylight	126.15	Passenger	North	Turning Left	Motor Vehicle In Traffic	On Pavement (Roadway)	(UNK)	(UNK)	(UNK)	(UNK)	1
										Passenger	North	Turning Left	Motor Vehicle In Traffic	On Pavement (Roadway)	(UNK)	(UNK)	(UNK)	(UNK)	2
201301053575																			
1/21/2013 7:50 AM	Clear	Dry	0	0	0	0	Turning	Daylight	126.15	Unknown	West	Straight Ahead	Motor Vehicle In Traffic	On Pavement (Roadway)	(UNK)	(UNK)	(UNK)	(UNK)	1
										Passenger	West	Turning Right	Motor Vehicle In Traffic	On Pavement (Roadway)	(UNK)	(UNK)	(UNK)	(UNK)	2
201301176150																			
3/23/2013 2:50 PM	Clear	Dry	0	0	0	0	Turning	Daylight	126.15	Passenger	North	Straight Ahead	Motor Vehicle In Traffic	On Pavement (Roadway)	(UNK)	(UNK)	(UNK)	(UNK)	1
										Passenger	North	Turning Right	Motor Vehicle In Traffic	On Pavement (Roadway)	(UNK)	(UNK)	(UNK)	(UNK)	2
201301186511																			
4/8/2013 9:30 AM	Clear	Dry	0	0	0	0	Rear End	Darkness/ Lighted Road	126.15	Passenger	East	Straight Ahead	Motor Vehicle In Traffic	On Pavement (Roadway)	(UNK)	(UNK)	(UNK)	(UNK)	1
										Passenger	East	Slow/Stop In Traffic	Motor Vehicle In Traffic	On Pavement (Roadway)	(UNK)	(UNK)	(UNK)	(UNK)	2
201301194130																			
4/20/2013 4:26 PM	Clear	Dry	0	0	0	0	Sideswipe Same Direction	Daylight	126.15	Passenger	West	Changing Lanes	Motor Vehicle In Traffic	On Pavement (Roadway)	(UNK)	(UNK)	(UNK)	(UNK)	1
										Passenger	West	Slow/Stop In Traffic	Motor Vehicle In Traffic	On Pavement (Roadway)	(UNK)	(UNK)	(UNK)	(UNK)	2
201301125861																			
5/3/2013 2:45 PM	Rain	Wet	0	2	0	0	Rear End	Daylight	126.15	SUV	West	Straight Ahead	Motor Vehicle In Traffic	On Pavement (Roadway)	(UNK)	(UNK)	(UNK)	(UNK)	1

Collision Diagram

1/1/2013 to 12/31/2013

Crash Route: IL064 | From MileStation 126.15 to 126.15 | County : Cook | Intersection Related: Intersections | *See Notes at End of Report.

Date	Weather	Roadway	----- A	Injuries B	----- C	Killed	Type of Crash	Light Condition	Mile	Vehicle Type	DIRP	Maneuver	Event 1	Loc 1	Event 2	Loc 2	Event 3	Loc 3	Unit
										Passenger	West	Slow/Stop In Traffic	Motor Vehicle In Traffic	On Pavement (Roadway)	(UNK)	(UNK)	(UNK)	(UNK)	2
201301210104																			
5/17/2013 3:00 PM	Clear	Dry	0	0	0	0	Rear End	Daylight	126.15										
										Passenger	West	Straight Ahead	Motor Vehicle In Traffic	On Pavement (Roadway)	(UNK)	(UNK)	(UNK)	(UNK)	1
										Pickup	West	Slow/Stop In Traffic	Motor Vehicle In Traffic	On Pavement (Roadway)	(UNK)	(UNK)	(UNK)	(UNK)	2
201301133973																			
5/27/2013 11:14 PM	Rain	Wet	0	0	0	0	Rear End	Darkness	126.15										
										Passenger	West	Straight Ahead	Motor Vehicle In Traffic	On Pavement (Roadway)	(UNK)	(UNK)	(UNK)	(UNK)	1
										SUV	West	Straight Ahead	Motor Vehicle In Traffic	On Pavement (Roadway)	(UNK)	(UNK)	(UNK)	(UNK)	2
201301138581																			
6/4/2013 5:30 PM	Clear	Dry	0	1	0	0	Rear End	Daylight	126.15										
										Passenger	East	Changing Lanes	Motor Vehicle In Traffic	On Pavement (Roadway)	(UNK)	(UNK)	(UNK)	(UNK)	1
										Other	East	Slow/Stop In Traffic	Motor Vehicle In Traffic	On Pavement (Roadway)	(UNK)	(UNK)	(UNK)	(UNK)	2
										Passenger	East	Slow/Stop In Traffic	Motor Vehicle In Traffic	On Pavement (Roadway)	(UNK)	(UNK)	(UNK)	(UNK)	3
201301241930																			
6/19/2013 5:30 PM	Clear	Dry	0	0	0	0	Turning	Daylight	126.15										
										Passenger	West	Turning Left	Motor Vehicle In Traffic	On Pavement (Roadway)	(UNK)	(UNK)	(UNK)	(UNK)	1
										Passenger	South	Straight Ahead	Motor Vehicle In Traffic	On Pavement (Roadway)	(UNK)	(UNK)	(UNK)	(UNK)	2
201301244075																			
6/22/2013 9:44 AM	Rain	Wet	0	0	0	0	Rear End	Daylight	126.15										
										Passenger	North	Straight Ahead	Motor Vehicle In Traffic	On Pavement (Roadway)	(UNK)	(UNK)	(UNK)	(UNK)	1
										SUV	North	Straight Ahead	Motor Vehicle In Traffic	On Pavement (Roadway)	(UNK)	(UNK)	(UNK)	(UNK)	2

Collision Diagram

1/1/2013 to 12/31/2013

Crash Route: IL064 | From MileStation 126.15 to 126.15 | County : Cook | Intersection Related: Intersections | *See Notes at End of Report.

Date	Weather	Roadway	----- A	Injuries B	----- C	Killed	Type of Crash	Light Condition	Mile	Vehicle Type	DIRP	Maneuver	Event 1	Loc 1	Event 2	Loc 2	Event 3	Loc 3	Unit
201301147573																			
7/2/2013 10:38 AM	Clear	Dry	0	1	0	0	Turning	Daylight	126.15	Passenger	South	Passing/Overtaking	Motor Vehicle In Traffic	On Pavement (Roadway)	(UNK)	(UNK)	(UNK)	(UNK)	1
										SUV	North	Turning Left	Motor Vehicle In Traffic	On Pavement (Roadway)	(UNK)	(UNK)	(UNK)	(UNK)	2
201301257584																			
7/2/2013 4:22 PM	Clear	Dry	0	0	0	0	Rear End	Daylight	126.15	SUV	South	Straight Ahead	Motor Vehicle In Traffic	On Pavement (Roadway)	(UNK)	(UNK)	(UNK)	(UNK)	1
										Passenger	South	Merging	Motor Vehicle In Traffic	On Pavement (Roadway)	(UNK)	(UNK)	(UNK)	(UNK)	2
201301149579																			
7/20/2013 10:07 PM	Rain	Wet	1	3	0	0	Turning	Darkness/ Lighted Road	126.15	Passenger	North	Turning Left	Motor Vehicle In Traffic	On Pavement (Roadway)	(UNK)	(UNK)	(UNK)	(UNK)	1
										Passenger	West	Straight Ahead	Motor Vehicle In Traffic	On Pavement (Roadway)	(UNK)	(UNK)	(UNK)	(UNK)	2
201301136435																			
7/31/2013 9:55 PM	Rain	Wet	0	1	0	0	Turning	Darkness/ Lighted Road	126.15	Van/Mini-Van	North	Turning Left	Motor Vehicle In Traffic	On Pavement (Roadway)	(UNK)	(UNK)	(UNK)	(UNK)	1
										Van/Mini-Van	West	Straight Ahead	Motor Vehicle In Traffic	On Pavement (Roadway)	(UNK)	(UNK)	(UNK)	(UNK)	2
										Passenger	South	Slow/Stop In Traffic	Motor Vehicle In Traffic	On Pavement (Roadway)	(UNK)	(UNK)	(UNK)	(UNK)	3
										Passenger	South	Slow/Stop In Traffic	Motor Vehicle In Traffic	On Pavement (Roadway)	(UNK)	(UNK)	(UNK)	(UNK)	4
201301290672																			
8/6/2013 4:01 PM	Clear	Dry	0	0	0	0	Turning	Daylight	126.15	Passenger	South	Turning Left	Motor Vehicle In Traffic	On Pavement (Roadway)	(UNK)	(UNK)	(UNK)	(UNK)	1
										Passenger	West	Straight Ahead	Motor Vehicle In Traffic	On Pavement (Roadway)	(UNK)	(UNK)	(UNK)	(UNK)	2

Collision Diagram

1/1/2013 to 12/31/2013

Crash Route: IL064 | From MileStation 126.15 to 126.15 | County : Cook | Intersection Related: Intersections | *See Notes at End of Report.

Date	Weather	Roadway	----- A	Injuries B	----- C	Killed	Type of Crash	Light Condition	Mile	Vehicle Type	DIRP	Maneuver	Event 1	Loc 1	Event 2	Loc 2	Event 3	Loc 3	Unit
201301141796																			
8/8/2013 10:00 AM	Clear	Dry	0	0	0	0	Sideswipe Same Direction	Daylight	126.15	Van/Mini-Van	North	Slow/Stop In Traffic	Motor Vehicle In Traffic	On Pavement (Roadway)	(UNK)	(UNK)	(UNK)	(UNK)	2
										Tractor With Semi-Trailer	North	Passing/Overtaking	Motor Vehicle In Traffic	On Pavement (Roadway)	(UNK)	(UNK)	(UNK)	(UNK)	1
201301294825																			
8/12/2013 6:12 PM	Clear	Dry	0	0	0	0	Rear End	Daylight	126.15	Passenger	East	Straight Ahead	Motor Vehicle In Traffic	On Pavement (Roadway)	(UNK)	(UNK)	(UNK)	(UNK)	1
										Passenger	East	Slow/Stop In Traffic	Motor Vehicle In Traffic	On Pavement (Roadway)	(UNK)	(UNK)	(UNK)	(UNK)	2
201301306305																			
8/20/2013 7:10 PM	Clear	Dry	0	0	0	0	Rear End	Daylight	126.15	SUV	West	Slow/Stop In Traffic	Motor Vehicle In Traffic	On Pavement (Roadway)	(UNK)	(UNK)	(UNK)	(UNK)	1
										SUV	West	Slow/Stop In Traffic	Motor Vehicle In Traffic	On Pavement (Roadway)	(UNK)	(UNK)	(UNK)	(UNK)	2
201301311788																			
8/27/2013 7:42 AM	Clear	Dry	0	0	0	0	Rear End	Daylight	126.15	Unknown	West	Unknown	Motor Vehicle In Traffic	On Pavement (Roadway)	(UNK)	(UNK)	(UNK)	(UNK)	1
										Passenger	West	Starting In Traffic	Motor Vehicle In Traffic	On Pavement (Roadway)	(UNK)	(UNK)	(UNK)	(UNK)	2
201301318750																			
9/4/2013 6:37 PM	Clear	Dry	0	0	1	0	Rear End	Daylight	126.15	Van/Mini-Van	West	Straight Ahead	Motor Vehicle In Traffic	On Pavement (Roadway)	(UNK)	(UNK)	(UNK)	(UNK)	1
										Passenger	West	Straight Ahead	Motor Vehicle In Traffic	On Pavement (Roadway)	(UNK)	(UNK)	(UNK)	(UNK)	2
										Unknown	West	Unknown	Motor Vehicle In Traffic	On Pavement (Roadway)	(UNK)	(UNK)	(UNK)	(UNK)	3

Collision Diagram

1/1/2013 to 12/31/2013

Crash Route: IL064 | From MileStation 126.15 to 126.15 | County : Cook | Intersection Related: Intersections | *See Notes at End of Report.

Date	Weather	Roadway	----- A	Injuries B	----- C	Killed	Type of Crash	Light Condition	Mile	Vehicle Type	DIRP	Maneuver	Event 1	Loc 1	Event 2	Loc 2	Event 3	Loc 3	Unit
201301365341																			
10/18/2013 5:30 PM	Clear	Dry	0	0	0	0	Rear End	Daylight	126.15	SUV	North	Straight Ahead	Motor Vehicle In Traffic	On Pavement (Roadway)	(UNK)	(UNK)	(UNK)	(UNK)	1
										Passenger	North	Straight Ahead	Motor Vehicle In Traffic	On Pavement (Roadway)	(UNK)	(UNK)	(UNK)	(UNK)	2
201301370202																			
10/24/2013 6:47 PM	Clear	Dry	0	0	0	0	Rear End	Dusk	126.15	Passenger	West	Straight Ahead	Motor Vehicle In Traffic	On Pavement (Roadway)	(UNK)	(UNK)	(UNK)	(UNK)	1
										Passenger	West	Straight Ahead	Motor Vehicle In Traffic	On Pavement (Roadway)	(UNK)	(UNK)	(UNK)	(UNK)	2
201301381598																			
11/5/2013 6:26 AM	Clear	Dry	0	0	0	0	Turning	Dawn	126.15	Passenger	West	Turning Left	Motor Vehicle In Traffic	On Pavement (Roadway)	(UNK)	(UNK)	(UNK)	(UNK)	1
										Van/Mini-Van	East	Straight Ahead	Motor Vehicle In Traffic	On Pavement (Roadway)	(UNK)	(UNK)	(UNK)	(UNK)	2
201301382445																			
11/6/2013 8:55 AM	Rain	Wet	0	0	1	0	Rear End	Daylight	126.15	SUV	East	Straight Ahead	Motor Vehicle In Traffic	On Pavement (Roadway)	(UNK)	(UNK)	(UNK)	(UNK)	1
										SUV	East	Slow/Stop In Traffic	Motor Vehicle In Traffic	On Pavement (Roadway)	(UNK)	(UNK)	(UNK)	(UNK)	2
201301419855																			
12/16/2013 7:31 PM	Snow	Snow or Slush	0	0	0	0	Turning	Darkness/ Lighted Road	126.15	Van/Mini-Van	West	Straight Ahead	Motor Vehicle In Traffic	Intersection	(UNK)	(UNK)	(UNK)	(UNK)	1
										Passenger	East	Turning Left	Motor Vehicle In Traffic	Intersection	(UNK)	(UNK)	(UNK)	(UNK)	2
201301422982																			
12/19/2013 12:08 PM	Cloudy/Overcast	Wet	0	0	0	0	Rear End	Daylight	126.15	SUV	North	Straight Ahead	Motor Vehicle In Traffic	On Pavement (Roadway)	(UNK)	(UNK)	(UNK)	(UNK)	1

Collision Diagram

1/1/2013 to 12/31/2013

Crash Route: IL064 | From MileStation 126.15 to 126.15 | County : Cook | Intersection Related: Intersections | *See Notes at End of Report.

Date	Weather	Roadway	----- A	Injuries B	----- C	Killed	Type of Crash	Light Condition	Mile	Vehicle Type	DIRP	Maneuver	Event 1	Loc 1	Event 2	Loc 2	Event 3	Loc 3	Unit
										Passenger	North	Slow/Stop In Traffic	Motor Vehicle In Traffic	On Pavement (Roadway)	Motor Vehicle In Traffic	On Pavemen t (Roadwa y)	(UNK)	(UNK)	2
										Passenger	North	Slow/Stop In Traffic	Motor Vehicle In Traffic	On Pavement (Roadway)	Motor Vehicle In Traffic	On Pavemen t (Roadwa y)	(UNK)	(UNK)	3
										Passenger	North	Slow/Stop In Traffic	Motor Vehicle In Traffic	On Pavement (Roadway)	(UNK)	(UNK)	(UNK)	(UNK)	4

201301430812																			
12/29/2013 9:00 PM	Clear	Wet	0	0	0	0	Rear End	Darkness	126.15										
										SUV	West	Starting In Traffic	Motor Vehicle In Traffic	On Pavement (Roadway)	(UNK)	(UNK)	(UNK)	(UNK)	1
										SUV	West	Slow/Stop In Traffic	Motor Vehicle In Traffic	On Pavement (Roadway)	(UNK)	(UNK)	(UNK)	(UNK)	2

Collision Diagram

1/1/2013 to 12/31/2013

Crash Route: IL064 | From MileStation 126.15 to 126.15 | County : Cook | Intersection Related: Intersections | *See Notes at End of Report.

TOTAL CRASHES	FATAL CRASHES	A INJURY CRASHES	B INJURY CRASHES	C INJURY CRASHES	PROPERTY DAMAGE CRASHES	TOTAL KILLED	TOTAL INJURED	A INJURIES	B INJURIES	C INJURIES
28	0	1	4	2	21	0	11	1	8	2

Type of Crash	Total	%	Day of Wk	Total	%	Hour of Day	Total	%	Vehicle Type	Total	%
Rear End	16	57.1%	Monday	5	17.9%	06 AM	1	3.6%	Other	1	1.6%
Sideswipe Same Direction	2	7.1%	Tuesday	7	25.0%	07 AM	2	7.1%	Passenger	37	59.7%
Turning	10	35.7%	Wednesday	4	14.3%	08 AM	1	3.6%	Pickup	1	1.6%
TOTAL:	28		Thursday	3	10.7%	09 AM	3	10.7%	SUV	13	21.0%
			Friday	4	14.3%	10 AM	2	7.1%	Tractor With Semi-Trailer	1	1.6%
			Saturday	4	14.3%	Noon	1	3.6%	Unknown	3	4.8%
			Sunday	1	3.6%	2 PM	2	7.1%	Van/Mini-Van	6	9.7%
			TOTAL:	28		3 PM	1	3.6%	TOTAL:	62	
						4 PM	3	10.7%			
						5 PM	3	10.7%			
						6 PM	3	10.7%			
						7 PM	2	7.1%			
						9 PM	2	7.1%			
						10 PM	1	3.6%			
						11 PM	1	3.6%			
						TOTAL:	28				

Weather Cond	Total	%	Light Cond	Total	%	Road Surface	Total	%	DIRP	Total	%
Clear	20	71.4%	Darkness	2	7.1%	Dry	19	67.9%	East	11	17.7%
Cloudy/Overcast	1	3.6%	Darkness/ Lighted Road	4	14.3%	Snow or Slush	1	3.6%	North	17	27.4%
Rain	6	21.4%	Dawn	1	3.6%				South	7	11.3%

Collision Diagram

1/1/2013 to 12/31/2013

Crash Route: IL064 | From MileStation 126.15 to 126.15 | County : Cook | Intersection Related: Intersections | *See Notes at End of Report.

<i>Weather Cond</i>	<i>Total</i>	<i>%</i>	<i>Light Cond</i>	<i>Total</i>	<i>%</i>	<i>Road Surface</i>	<i>Total</i>	<i>%</i>	<i>DIRP</i>	<i>Total</i>	<i>%</i>
Snow	1	3.6%	Daylight	20	71.4%	Wet	8	28.6%	West	27	43.5%
TOTAL:	28		Dusk	1	3.6%	TOTAL:	28		TOTAL:	62	
			TOTAL:	28							

Collision Diagram

1/1/2013 to 12/31/2013

Crash Route: IL064 | From MileStation 126.15 to 126.15 | County : Cook | Intersection Related: Intersections | *See Notes at End of Report.

Notes

Current year and previous year data are not yet complete and are subject to change as more information becomes available. Calendar date selections include data based on the date of the crash. Year selections include data based on the statistical year in which the crash was processed.

The intersection-related field could be incorrect and affect the data on the report.

If a crash occurs between two municipalities, it may be coded to another city/county from what is on the crash report.

Crashes with incomplete location information are not included.

Areas where routes have more than one junction have been known to cause problems in determining accurate locations. Please notify us to verify the data for intersections with more than one junction.

For roadway segments which include the intersection of two routes, the intersection report may need to be run on the other route in order to get all the crashes.

Collision Diagram

1/1/2012 to 12/31/2012

Crash Route: IL064 | From MileStation 126.15 to 126.15 | County : Cook | Intersection Related: Intersections | *See Notes at End of Report.

Date	Weather	Roadway	----- A	Injuries B	----- C	Killed	Type of Crash	Light Condition	Mile	Vehicle Type	DIRP	Maneuver	Event 1	Loc 1	Event 2	Loc 2	Event 3	Loc 3	Unit
201201032277																			
1/12/2012 10:10 PM	Snow	Snow or Slush	0	0	0	0	Turning	Darkness, Lighted Road	126.15	Passenger	North	Turning Left	Motor Vehicle In Traffic	On Pavement (Roadway)	(UNK)	(UNK)	(UNK)	(UNK)	1
										Passenger	West	Straight Ahead	Motor Vehicle In Traffic	On Pavement (Roadway)	(UNK)	(UNK)	(UNK)	(UNK)	2
201201083951																			
2/7/2012 6:21 PM	Clear	Dry	0	0	0	0	Rear End	Darkness, Lighted Road	126.15	Truck Single Unit	West	Slow/Stop In Traffic	Motor Vehicle In Traffic	On Pavement (Roadway)	(UNK)	(UNK)	(UNK)	(UNK)	1
										Passenger	West	Slow/Stop - Left Turn	Motor Vehicle In Traffic	On Pavement (Roadway)	(UNK)	(UNK)	(UNK)	(UNK)	2
201201059124																			
3/5/2012 4:30 PM	Clear	Dry	0	0	0	0	Rear End	Daylight	126.15	SUV	West	Straight Ahead	Motor Vehicle In Traffic	On Pavement (Roadway)	(UNK)	(UNK)	(UNK)	(UNK)	1
										SUV	West	Slow/Stop In Traffic	Motor Vehicle In Traffic	On Pavement (Roadway)	Motor Vehicle In Traffic	On Pavement (Roadway)	(UNK)	(UNK)	2
										Passenger	West	Slow/Stop In Traffic	Motor Vehicle In Traffic	On Pavement (Roadway)	(UNK)	(UNK)	(UNK)	(UNK)	3
201201071532																			
3/20/2012 4:54 AM	Clear	Dry	1	0	0	0	Turning	Darkness, Lighted Road	126.15	SUV	North	Turning Left	Motor Vehicle In Traffic	Intersection	(UNK)	(UNK)	(UNK)	(UNK)	1
										Motorcycle (Over 150cc)	South	Straight Ahead	Motor Vehicle In Traffic	Intersection	(UNK)	(UNK)	(UNK)	(UNK)	2
201201091469																			
4/8/2012 5:54 AM	Clear	Dry	0	0	2	0	Turning	Dawn	126.15	Passenger	East	Turning Left	Motor Vehicle In Traffic	On Pavement (Roadway)	(UNK)	(UNK)	(UNK)	(UNK)	1
										Tractor With Semi-Trailer	East	Turning Left	Motor Vehicle In Traffic	On Pavement (Roadway)	(UNK)	(UNK)	(UNK)	(UNK)	2

Collision Diagram

1/1/2012 to 12/31/2012

Crash Route: IL064 | From MileStation 126.15 to 126.15 | County : Cook | Intersection Related: Intersections | *See Notes at End of Report.

Date	Weather	Roadway	----- A	Injuries B	----- C	Killed	Type of Crash	Light Condition	Mile	Vehicle Type	DIRP	Maneuver	Event 1	Loc 1	Event 2	Loc 2	Event 3	Loc 3	Unit
201201192616																			
4/25/2012 3:00 PM	Rain	Wet	0	0	0	0	Turning	Daylight	126.15	Passenger	West	Straight Ahead	Motor Vehicle In Traffic	On Pavement (Roadway)	(UNK)	(UNK)	(UNK)	(UNK)	1
										Tractor Without Semi-Trailer	East	Turning Left	Motor Vehicle In Traffic	On Pavement (Roadway)	(UNK)	(UNK)	(UNK)	(UNK)	2
201201196873																			
5/2/2012 10:40 PM	Clear	Dry	0	0	0	0	Angle	Daylight	126.15	SUV	Northwest	Slow/Stop - Left Turn	Motor Vehicle In Traffic	On Pavement (Roadway)	(UNK)	(UNK)	(UNK)	(UNK)	1
										SUV	South	Straight Ahead	Motor Vehicle In Traffic	On Pavement (Roadway)	(UNK)	(UNK)	(UNK)	(UNK)	2
201201213584																			
5/23/2012 7:43 PM	Clear	Dry	0	0	0	0	Turning	Daylight	126.15	Tractor Without Semi-Trailer	East	Turning Left	Motor Vehicle In Traffic	On Pavement (Roadway)	(UNK)	(UNK)	(UNK)	(UNK)	1
										Passenger	East	Turning Left	Motor Vehicle In Traffic	On Pavement (Roadway)	(UNK)	(UNK)	(UNK)	(UNK)	2
201201214202																			
5/24/2012 7:44 AM	Clear	Dry	0	0	0	0	Rear End	Daylight	126.15	Passenger	East	Straight Ahead	Motor Vehicle In Traffic	On Pavement (Roadway)	(UNK)	(UNK)	(UNK)	(UNK)	1
										Passenger	East	Straight Ahead	Motor Vehicle In Traffic	On Pavement (Roadway)	(UNK)	(UNK)	(UNK)	(UNK)	2
201201132028																			
5/29/2012 6:43 PM	Clear	Dry	0	0	2	0	Turning	Daylight	126.15	Tractor With Semi-Trailer	East	Avoiding Vehicle/Objects	Motor Vehicle In Traffic	On Pavement (Roadway)	(UNK)	(UNK)	(UNK)	(UNK)	1
										Passenger	West	Turning Left	Motor Vehicle In Traffic	On Pavement (Roadway)	(UNK)	(UNK)	(UNK)	(UNK)	2
201201246189																			
6/25/2012 10:46 PM	Clear	Dry	0	0	0	0	Turning	Darkness	126.15	Passenger	North	Turning Right	Motor Vehicle In Traffic	On Pavement (Roadway)	(UNK)	(UNK)	(UNK)	(UNK)	1

Collision Diagram

1/1/2012 to 12/31/2012

Crash Route: IL064 | From MileStation 126.15 to 126.15 | County : Cook | Intersection Related: Intersections | *See Notes at End of Report.

Date	Weather	Roadway	A	Injuries B	C	Killed	Type of Crash	Light Condition	Mile	Vehicle Type	DIRP	Maneuver	Event 1	Loc 1	Event 2	Loc 2	Event 3	Loc 3	Unit
										Passenger	East	Turning Left	Motor Vehicle In Traffic	On Pavement (Roadway)	(UNK)	(UNK)	(UNK)	(UNK)	2
201201249711																			
6/28/2012 12:30 PM	Clear	Dry	0	0	0	0	Rear End	Daylight	126.15										
										Passenger	South	Slow/Stop - Left Turn	Motor Vehicle In Traffic	On Pavement (Roadway)	(UNK)	(UNK)	(UNK)	(UNK)	2
										SUV	South	Straight Ahead	Motor Vehicle In Traffic	On Pavement (Roadway)	(UNK)	(UNK)	(UNK)	(UNK)	1
201201173977																			
7/11/2012 7:15 AM	Clear	Dry	0	1	0	0	Turning	Daylight	126.15										
										Pickup	West	Straight Ahead	Motor Vehicle In Traffic	On Pavement (Roadway)	(UNK)	(UNK)	(UNK)	(UNK)	1
										Passenger	North	Turning Left	Motor Vehicle In Traffic	On Pavement (Roadway)	Motor Vehicle In Traffic	On Pavement (Roadway)	Motor Vehicle In Traffic	On Pavement (Roadway)	2
										Passenger	South	Slow/Stop In Traffic	Motor Vehicle In Traffic	On Pavement (Roadway)	(UNK)	(UNK)	(UNK)	(UNK)	3
										Passenger	South	Slow/Stop - Left Turn	Motor Vehicle In Traffic	On Pavement (Roadway)	(UNK)	(UNK)	(UNK)	(UNK)	4
201201173914																			
7/12/2012 4:53 PM	Clear	Dry	0	0	0	0	Turning	Daylight	126.15										
										SUV	Southeast	Turning Left	Motor Vehicle In Traffic	On Pavement (Roadway)	(UNK)	(UNK)	(UNK)	(UNK)	1
										Passenger	North	Straight Ahead	Motor Vehicle In Traffic	On Pavement (Roadway)	(UNK)	(UNK)	(UNK)	(UNK)	2
201201268527																			
7/17/2012 9:58 AM	Clear	Dry	0	0	0	0	Turning	Daylight	126.15										
										Passenger	Southwest	Turning Right	Motor Vehicle In Traffic	On Pavement (Roadway)	(UNK)	(UNK)	(UNK)	(UNK)	1
										SUV	East	Straight Ahead	Motor Vehicle In Traffic	On Pavement (Roadway)	(UNK)	(UNK)	(UNK)	(UNK)	2

Collision Diagram

1/1/2012 to 12/31/2012

Crash Route: IL064 | From MileStation 126.15 to 126.15 | County : Cook | Intersection Related: Intersections | *See Notes at End of Report.

Date	Weather	Roadway	----- A	Injuries B	----- C	Killed	Type of Crash	Light Condition	Mile	Vehicle Type	DIRP	Maneuver	Event 1	Loc 1	Event 2	Loc 2	Event 3	Loc 3	Unit
201201275048																			
7/22/2012 1:23 AM	Clear	Dry	0	0	0	0	Rear End	Darkness, Lighted Road	126.15	Passenger	East	Straight Ahead	Motor Vehicle In Traffic	On Pavement (Roadway)	(UNK)	(UNK)	(UNK)	(UNK)	1
										Passenger	East	Straight Ahead	Motor Vehicle In Traffic	On Pavement (Roadway)	(UNK)	(UNK)	(UNK)	(UNK)	2
201201286035																			
8/1/2012 3:35 PM	Clear	Dry	0	0	0	0	Angle	Daylight	126.15	Passenger	North	Slow/Stop - Right Turn	Motor Vehicle In Traffic	On Pavement (Roadway)	(UNK)	(UNK)	(UNK)	(UNK)	2
										Pickup	Unknown	Unknown	Motor Vehicle In Traffic	On Pavement (Roadway)	(UNK)	(UNK)	(UNK)	(UNK)	1
201201291338																			
8/5/2012 7:41 PM	Clear	Dry	0	0	0	0	Rear End	Daylight	126.15	Passenger	South	Slow/Stop - Left Turn	Motor Vehicle In Traffic	Intersection	(UNK)	(UNK)	(UNK)	(UNK)	1
										Passenger	South	Slow/Stop - Left Turn	Motor Vehicle In Traffic	Intersection	(UNK)	(UNK)	(UNK)	(UNK)	2
201201209207																			
8/24/2012 8:47 AM	Clear	Dry	0	0	1	0	Rear End	Daylight	126.15	Truck Single Unit	East	Straight Ahead	Motor Vehicle In Traffic	On Pavement (Roadway)	(UNK)	(UNK)	(UNK)	(UNK)	1
										Van/Mini-Van	East	Slow/Stop In Traffic	Motor Vehicle In Traffic	On Pavement (Roadway)	(UNK)	(UNK)	(UNK)	(UNK)	2
201201361952																			
9/21/2012 12:27 AM	Rain	Wet	0	0	2	0	Rear End	Darkness	126.15	Passenger	East	Straight Ahead	Motor Vehicle In Traffic	On Pavement (Roadway)	(UNK)	(UNK)	(UNK)	(UNK)	1
										Passenger	East	Straight Ahead	Motor Vehicle In Traffic	On Pavement (Roadway)	(UNK)	(UNK)	(UNK)	(UNK)	2
201201364542																			
9/24/2012 7:48 PM	Clear	Dry	0	0	0	0	Rear End	Daylight	126.15	SUV	North	Straight Ahead	Motor Vehicle In Traffic	On Pavement (Roadway)	(UNK)	(UNK)	(UNK)	(UNK)	1

Collision Diagram

1/1/2012 to 12/31/2012

Crash Route: IL064 | From MileStation 126.15 to 126.15 | County : Cook | Intersection Related: Intersections | *See Notes at End of Report.

Date	Weather	Roadway	----- A	Injuries B	----- C	Killed	Type of Crash	Light Condition	Mile	Vehicle Type	DIRP	Maneuver	Event 1	Loc 1	Event 2	Loc 2	Event 3	Loc 3	Unit
										SUV	North	Straight Ahead	Motor Vehicle In Traffic	On Pavement (Roadway)	(UNK)	(UNK)	(UNK)	(UNK)	2
201201372471																			
10/3/2012 1:00 PM	Clear	Wet	0	0	0	0	Rear End	Daylight	126.15										
										SUV	West	Straight Ahead	Motor Vehicle In Traffic	On Pavement (Roadway)	(UNK)	(UNK)	(UNK)	(UNK)	1
										SUV	West	Slow/Stop In Traffic	Motor Vehicle In Traffic	On Pavement (Roadway)	(UNK)	(UNK)	(UNK)	(UNK)	2
201201254940																			
10/4/2012 5:53 AM	Rain	Wet	0	0	1	0	Rear End	Darkness	126.15										
										Truck Single Unit	West	Straight Ahead	Motor Vehicle In Traffic	On Pavement (Roadway)	(UNK)	(UNK)	(UNK)	(UNK)	1
										Passenger	West	Straight Ahead	Motor Vehicle In Traffic	On Pavement (Roadway)	(UNK)	(UNK)	(UNK)	(UNK)	2
201201377640																			
10/10/2012 5:30 PM	Clear	Dry	0	0	0	0	Rear End	Daylight	126.15										
										Passenger	Northeast	Slow/Stop In Traffic	Motor Vehicle In Traffic	On Pavement (Roadway)	(UNK)	(UNK)	(UNK)	(UNK)	1
										Passenger	Northeast	Straight Ahead	Motor Vehicle In Traffic	On Pavement (Roadway)	(UNK)	(UNK)	(UNK)	(UNK)	2
201201389796																			
10/25/2012 12:41 PM	Clear	Dry	0	0	0	0	Rear End	Daylight	126.15										
										Passenger	West	Straight Ahead	Motor Vehicle In Traffic	On Pavement (Roadway)	(UNK)	(UNK)	(UNK)	(UNK)	1
										Passenger	West	Slow/Stop In Traffic	Motor Vehicle In Traffic	On Pavement (Roadway)	(UNK)	(UNK)	(UNK)	(UNK)	2
										SUV	West	Slow/Stop In Traffic	Motor Vehicle In Traffic	On Pavement (Roadway)	(UNK)	(UNK)	(UNK)	(UNK)	3
201201405908																			
11/14/2012 4:15 PM	Clear	Dry	0	0	0	0	Rear End	Daylight	126.15										
										SUV	East	Slow/Stop In Traffic	Motor Vehicle In Traffic	On Pavement (Roadway)	(UNK)	(UNK)	(UNK)	(UNK)	1
										Passenger	East	Slow/Stop In Traffic	Motor Vehicle In Traffic	On Pavement (Roadway)	(UNK)	(UNK)	(UNK)	(UNK)	2

Collision Diagram

1/1/2012 to 12/31/2012

Crash Route: IL064 | From MileStation 126.15 to 126.15 | County : Cook | Intersection Related: Intersections | *See Notes at End of Report.

TOTAL CRASHES	FATAL CRASHES	A INJURY CRASHES	B INJURY CRASHES	C INJURY CRASHES	PROPERTY DAMAGE CRASHES	TOTAL KILLED	TOTAL INJURED	A INJURIES	B INJURIES	C INJURIES
<u>26</u>	<u>0</u>	<u>1</u>	<u>1</u>	<u>5</u>	<u>19</u>	<u>0</u>	<u>10</u>	<u>1</u>	<u>1</u>	<u>8</u>

Type of Crash	Total	%	Day of Wk	Total	%	Hour of Day	Total	%	Vehicle Type	Total	%
Angle	2	7.7%	Monday	3	11.5%	Midnight	1	3.8%	Motorcycle (Over 150cc)	1	1.8%
Rear End	14	53.8%	Tuesday	4	15.4%	01 AM	1	3.8%	Passenger	31	55.4%
Turning	10	38.5%	Wednesday	8	30.8%	04 AM	1	3.8%	Pickup	2	3.6%
TOTAL:	26		Thursday	6	23.1%	05 AM	2	7.7%	SUV	14	25.0%
			Friday	2	7.7%	07 AM	2	7.7%	Tractor With Semi-Trailer	2	3.6%
			Sunday	3	11.5%	08 AM	1	3.8%	Tractor Without Semi-Trailer	2	3.6%
			TOTAL:	26		09 AM	1	3.8%	Truck Single Unit	3	5.4%
						Noon	2	7.7%	Van/Mini-Van	1	1.8%
						1 PM	1	3.8%	TOTAL:	56	
						3 PM	2	7.7%			
						4 PM	3	11.5%			
						5 PM	1	3.8%			
						6 PM	2	7.7%			
						7 PM	3	11.5%			
						10 PM	3	11.5%			
						TOTAL:	26				

Weather Cond	Total	%	Light Cond	Total	%	Road Surface	Total	%	DIRP	Total	%
Clear	22	84.6%	Darkness	3	11.5%	Dry	21	80.8%	East	18	32.1%
Rain	3	11.5%	Darkness, Lighted Road	4	15.4%	Snow or Slush	1	3.8%	North	8	14.3%
			Dawn	1	3.8%				Northeast	2	3.6%

Collision Diagram

1/1/2012 to 12/31/2012

Crash Route: IL064 | From MileStation 126.15 to 126.15 | County : Cook | Intersection Related: Intersections | *See Notes at End of Report.

<i>Weather Cond</i>	<i>Total</i>	<i>%</i>	<i>Light Cond</i>	<i>Total</i>	<i>%</i>	<i>Road Surface</i>	<i>Total</i>	<i>%</i>	<i>DIRP</i>	<i>Total</i>	<i>%</i>
Snow	1	3.8%	Daylight	18	69.2%	Wet	4	15.4%	Northwest	1	1.8%
TOTAL:	26		TOTAL:	26		TOTAL:	26		South	8	14.3%
									Southeast	1	1.8%
									Southwest	1	1.8%
									Unknown	1	1.8%
									West	16	28.6%
									TOTAL:	56	

Collision Diagram

1/1/2012 to 12/31/2012

Crash Route: IL064 | From MileStation 126.15 to 126.15 | County : Cook | Intersection Related: Intersections | *See Notes at End of Report.

Notes

Current year and previous year data are not yet complete and are subject to change as more information becomes available. Calendar date selections include data based on the date of the crash. Year selections include data based on the statistical year in which the crash was processed.

The intersection-related field could be incorrect and affect the data on the report.

If a crash occurs between two municipalities, it may be coded to another city/county from what is on the crash report.

Crashes with incomplete location information are not included.

Areas where routes have more than one junction have been known to cause problems in determining accurate locations. Please notify us to verify the data for intersections with more than one junction.

For roadway segments which include the intersection of two routes, the intersection report may need to be run on the other route in order to get all the crashes.

Collision Diagram

1/1/2011 to 12/31/2011

Crash Route: IL064 | From MileStation 126.15 to 126.15 | County : Cook | Intersection Related: Intersections | *See Notes at End of Report.

Date	Weather	Roadway	----- A	Injuries B	----- C	Killed	Type of Crash	Light Condition	Mile	Vehicle Type	DIRP	Maneuver	Event 1	Loc 1	Event 2	Loc 2	Event 3	Loc 3	Unit
201101038931																			
1/15/2011 12:12 PM	Clear	Dry	0	0	0	0	11-Rear end	Daylight	126.15	Passenger	West	Straight ahead	Motor vehicle in traffic	On-pavement (roadway)	(UNK)	(UNK)	(UNK)	(UNK)	1
										Pickup	West	Slow/stop in traffic	Motor vehicle in traffic	On-pavement (roadway)	(UNK)	(UNK)	(UNK)	(UNK)	2
201101042241																			
1/18/2011 11:08 AM	Clear	Dry	0	0	0	0	10-Turning	Daylight	126.15	Pickup	South	Turning left	Motor vehicle in traffic	On-pavement (roadway)	(UNK)	(UNK)	(UNK)	(UNK)	1
										Passenger	South	Turning left	Motor vehicle in traffic	On-pavement (roadway)	(UNK)	(UNK)	(UNK)	(UNK)	2
201101039028																			
1/19/2011 5:37 AM	Clear	Unknown	0	0	1	0	15-Angle	Darkness	126.15	Passenger	West	Straight ahead	Motor vehicle in traffic	On-pavement (roadway)	(UNK)	(UNK)	(UNK)	(UNK)	1
										Van/mini van	North	Slow/stop – left turn	Motor vehicle in traffic	On-pavement (roadway)	(UNK)	(UNK)	(UNK)	(UNK)	2
201101039178																			
1/20/2011 12:59 PM	Clear	Dry	0	0	0	0	11-Rear end	Daylight	126.15	Passenger	East	Starting in traffic	Motor vehicle in traffic	On-pavement (roadway)	(UNK)	(UNK)	(UNK)	(UNK)	1
										Passenger	East	Starting in traffic	Motor vehicle in traffic	On-pavement (roadway)	(UNK)	(UNK)	(UNK)	(UNK)	2
201101068164																			
1/28/2011 6:15 AM	Clear	Wet	0	1	0	0	10-Turning	Dawn	126.15	Passenger	South	Turning left	Motor vehicle in traffic	On-pavement (roadway)	(UNK)	(UNK)	(UNK)	(UNK)	1
										Passenger	North	Straight ahead	Motor vehicle in traffic	On-pavement (roadway)	(UNK)	(UNK)	(UNK)	(UNK)	2

Collision Diagram

1/1/2011 to 12/31/2011

Crash Route: IL064 | From MileStation 126.15 to 126.15 | County : Cook | Intersection Related: Intersections | *See Notes at End of Report.

Date	Weather	Roadway	----- A	Injuries B	----- C	Killed	Type of Crash	Light Condition	Mile	Vehicle Type	DIRP	Maneuver	Event 1	Loc 1	Event 2	Loc 2	Event 3	Loc 3	Unit
201101099043																			
3/10/2011 9:44 AM	Clear	Dry	0	0	0	0	10-Turning	Daylight	126.15	Truck – single unit	North	Turning left	Motor vehicle in traffic	On-pavement (roadway)	(UNK)	(UNK)	(UNK)	(UNK)	1
										Other	North	Turning left	Motor vehicle in traffic	On-pavement (roadway)	(UNK)	(UNK)	(UNK)	(UNK)	2
201101094861																			
3/16/2011 8:25 PM	Clear	Dry	0	1	0	0	11-Rear end	Darkness/Lighted road	126.15	Van/mini van	West	Straight ahead	Motor vehicle in traffic	On-pavement (roadway)	(UNK)	(UNK)	(UNK)	(UNK)	1
										Passenger	West	Slow/stop in traffic	Motor vehicle in traffic	On-pavement (roadway)	(UNK)	(UNK)	(UNK)	(UNK)	2
201101122826																			
4/7/2011 12:15 PM	Clear	Dry	0	0	0	0	11-Rear end	Daylight	126.15	Passenger	East	Straight ahead	Motor vehicle in traffic	On-pavement (roadway)	(UNK)	(UNK)	(UNK)	(UNK)	1
										Passenger	East	Slow/stop in traffic	Motor vehicle in traffic	On-pavement (roadway)	(UNK)	(UNK)	(UNK)	(UNK)	2
201101145347																			
4/11/2011 5:10 PM	Clear	Dry	0	0	0	0	11-Rear end	Daylight	126.15	Passenger	West	Straight ahead	Motor vehicle in traffic	On-pavement (roadway)	(UNK)	(UNK)	(UNK)	(UNK)	1
										Passenger	West	Straight ahead	Motor vehicle in traffic	On-pavement (roadway)	(UNK)	(UNK)	(UNK)	(UNK)	2
201101136831																			
4/19/2011 5:58 PM	Fog/smoke/haze	Wet	0	0	0	0	11-Rear end	Daylight	126.15	Passenger	East	Straight ahead	Motor vehicle in traffic	On-pavement (roadway)	(UNK)	(UNK)	(UNK)	(UNK)	1
										Pickup	East	Slow/stop in traffic	Motor vehicle in traffic	On-pavement (roadway)	(UNK)	(UNK)	(UNK)	(UNK)	2

Collision Diagram

1/1/2011 to 12/31/2011

Crash Route: IL064 | From MileStation 126.15 to 126.15 | County : Cook | Intersection Related: Intersections | *See Notes at End of Report.

Date	Weather	Roadway	----- A	Injuries B	----- C	Killed	Type of Crash	Light Condition	Mile	Vehicle Type	DIRP	Maneuver	Event 1	Loc 1	Event 2	Loc 2	Event 3	Loc 3	Unit
201101153037																			
5/5/2011 9:38 PM	Rain	Wet	0	0	0	0	10-Turning	Darkness/Lighted road	126.15	Passenger	North	Turning left	Motor vehicle in traffic	On-pavement (roadway)	(UNK)	(UNK)	(UNK)	(UNK)	1
										Sport utility vehicle (SUV)	West	Straight ahead	Motor vehicle in traffic	On-pavement (roadway)	(UNK)	(UNK)	(UNK)	(UNK)	2
										Passenger	Southwest	Turning right	Motor vehicle in traffic	On-pavement (roadway)	(UNK)	(UNK)	(UNK)	(UNK)	3
201101204405																			
6/28/2011 2:18 PM	Clear	Dry	0	0	0	0	10-Turning	Daylight	126.15	Passenger	South	Turning left	Motor vehicle in traffic	On-pavement (roadway)	(UNK)	(UNK)	(UNK)	(UNK)	1
										Tractor w/ semi-trailer	North	Straight ahead	Motor vehicle in traffic	On-pavement (roadway)	(UNK)	(UNK)	(UNK)	(UNK)	2
201101263733																			
7/28/2011 3:30 PM	Clear	Dry	0	0	0	0	11-Rear end	Daylight	126.15	Pickup	West	Straight ahead	Motor vehicle in traffic	On-pavement (roadway)	(UNK)	(UNK)	(UNK)	(UNK)	1
										Sport utility vehicle (SUV)	West	Slow/stop in traffic	Motor vehicle in traffic	On-pavement (roadway)	(UNK)	(UNK)	(UNK)	(UNK)	2
										Unknown/NA	West	Slow/stop in traffic	Motor vehicle in traffic	On-pavement (roadway)	(UNK)	(UNK)	(UNK)	(UNK)	3
201101263780																			
7/31/2011 5:54 PM	Clear	Dry	0	0	1	0	10-Turning	Daylight	126.15	Passenger	North	Turning left	Motor vehicle in traffic	On-pavement (roadway)	(UNK)	(UNK)	(UNK)	(UNK)	1
										Passenger	West	Straight ahead	Motor vehicle in traffic	On-pavement (roadway)	(UNK)	(UNK)	(UNK)	(UNK)	2
201101269176																			
8/8/2011 5:34 PM	Rain	Wet	0	1	0	0	11-Rear end	Daylight	126.15	Passenger	East	Straight ahead	Motor vehicle in traffic	On-pavement (roadway)	(UNK)	(UNK)	(UNK)	(UNK)	1

Collision Diagram

1/1/2011 to 12/31/2011

Crash Route: IL064 | From MileStation 126.15 to 126.15 | County : Cook | Intersection Related: Intersections | *See Notes at End of Report.

Date	Weather	Roadway	----- A	Injuries B	----- C	Killed	Type of Crash	Light Condition	Mile	Vehicle Type	DIRP	Maneuver	Event 1	Loc 1	Event 2	Loc 2	Event 3	Loc 3	Unit
										Passenger	East	Straight ahead	Motor vehicle in traffic	On-pavement (roadway)	(UNK)	(UNK)	(UNK)	(UNK)	2
201101268115																			
8/9/2011 5:27 PM	Clear	Dry	0	0	0	0	10-Turning	Daylight	126.15										
										Passenger	Southwest	Turning left	Motor vehicle in traffic	On-pavement (roadway)	(UNK)	(UNK)	(UNK)	(UNK)	1
										Van/mini van	East	Straight ahead	Motor vehicle in traffic	On-pavement (roadway)	(UNK)	(UNK)	(UNK)	(UNK)	2
201101370107																			
10/24/2011 4:11 PM	Clear	Dry	0	0	0	0	10-Turning	Daylight	126.15										
										Passenger	Northwest	Turning left	Motor vehicle in traffic	On-pavement (roadway)	(UNK)	(UNK)	(UNK)	(UNK)	1
										Sport utility vehicle (SUV)	West	Straight ahead	Motor vehicle in traffic	On-pavement (roadway)	(UNK)	(UNK)	(UNK)	(UNK)	2
201101430630																			
10/28/2011 3:05 PM	Clear	Dry	0	0	0	0	11-Rear end	Daylight	126.15										
										Pickup	East	Straight ahead	Motor vehicle in traffic	On-pavement (roadway)	(UNK)	(UNK)	(UNK)	(UNK)	1
										Sport utility vehicle (SUV)	East	Slow/stop in traffic	Motor vehicle in traffic	On-pavement (roadway)	(UNK)	(UNK)	(UNK)	(UNK)	2
201101406210																			
11/18/2011 6:03 PM	Clear	Dry	0	0	0	0	11-Rear end	Darkness/Lighted road	126.15										
										Passenger	South	Straight ahead	Motor vehicle in traffic	On-pavement (roadway)	(UNK)	(UNK)	(UNK)	(UNK)	1
										Passenger	South	Straight ahead	Motor vehicle in traffic	On-pavement (roadway)	(UNK)	(UNK)	(UNK)	(UNK)	2
201101412442																			
11/26/2011 7:20 PM	Rain	Wet	0	0	0	0	12-Sideswipe same direction	Darkness	126.15										
										Passenger	South	Merging	Motor vehicle in traffic	On-pavement (roadway)	(UNK)	(UNK)	(UNK)	(UNK)	1
										Passenger	South	Slow/stop in traffic	Motor vehicle in traffic	On-pavement (roadway)	(UNK)	(UNK)	(UNK)	(UNK)	2



Collision Diagram

1/1/2011 to 12/31/2011

Crash Route: IL064 | From MileStation 126.15 to 126.15 | County : Cook | Intersection Related: Intersections | *See Notes at End of Report.

Date	Weather	Roadway	----- A	Injuries B	----- C	Killed	Type of Crash	Light Condition	Mile	Vehicle Type	DIRP	Maneuver	Event 1	Loc 1	Event 2	Loc 2	Event 3	Loc 3	Unit
201101412496																			
11/27/2011 2:22 PM	Rain	Dry	0	0	0	0	10-Turning	Daylight	126.15	Passenger	West	Turning left	Motor vehicle in traffic	On-pavement (roadway)	(UNK)	(UNK)	(UNK)	(UNK)	1
										Passenger	Northeast	Straight ahead	Motor vehicle in traffic	On-pavement (roadway)	(UNK)	(UNK)	(UNK)	(UNK)	2
201101432395																			
12/18/2011 6:24 PM	Clear	Dry	0	1	0	0	11-Rear end	Darkness/Lighted road	126.15	Sport utility vehicle (SUV)	South	Straight ahead	Motor vehicle in traffic	On-pavement (roadway)	(UNK)	(UNK)	(UNK)	(UNK)	1
										Pickup	South	Slow/stop in traffic	Motor vehicle in traffic	On-pavement (roadway)	(UNK)	(UNK)	(UNK)	(UNK)	2
										Sport utility vehicle (SUV)	South	Slow/stop in traffic	Motor vehicle in traffic	On-pavement (roadway)	(UNK)	(UNK)	(UNK)	(UNK)	3

Collision Diagram

1/1/2011 to 12/31/2011

Crash Route: IL064 | From MileStation 126.15 to 126.15 | County : Cook | Intersection Related: Intersections | *See Notes at End of Report.

TOTAL CRASHES	FATAL CRASHES	A INJURY CRASHES	B INJURY CRASHES	C INJURY CRASHES	PROPERTY DAMAGE CRASHES	TOTAL KILLED	TOTAL INJURED	A INJURIES	B INJURIES	C INJURIES
<u>22</u>	<u>0</u>	<u>0</u>	<u>4</u>	<u>2</u>	<u>16</u>	<u>0</u>	<u>6</u>	<u>0</u>	<u>4</u>	<u>2</u>

Type of Crash	Total	%	Day of Wk	Total	%	Hour of Day	Total	%	Vehicle Type	Total	%
10-Turning	9	40.9%	Monday	3	13.6%	05 AM	1	4.5%	Other	1	2.1%
11-Rear end	11	50.0%	Tuesday	4	18.2%	06 AM	1	4.5%	Passenger	28	59.6%
12-Sideswipe same direction	1	4.5%	Wednesday	2	9.1%	09 AM	1	4.5%	Pickup	6	12.8%
15-Angle	1	4.5%	Thursday	5	22.7%	11 AM	1	4.5%	Sport utility vehicle (SUV)	6	12.8%
TOTAL:	22		Friday	3	13.6%	Noon	3	13.6%	Tractor w/ semi-trailer	1	2.1%
			Saturday	2	9.1%	2 PM	2	9.1%	Truck – single unit	1	2.1%
			Sunday	3	13.6%	3 PM	2	9.1%	Unknown/NA	1	2.1%
			TOTAL:	22		4 PM	1	4.5%	Van/mini van	3	6.4%
						5 PM	5	22.7%	TOTAL:	47	
						6 PM	2	9.1%			
						7 PM	1	4.5%			
						8 PM	1	4.5%			
						9 PM	1	4.5%			
						TOTAL:	22				

Weather Cond	Total	%	Light Cond	Total	%	Road Surface	Total	%	DIRP	Total	%
Clear	17	77.3%	Darkness	2	9.1%	Dry	16	72.7%	East	11	23.4%
Fog/smoke/haze	1	4.5%	Darkness/Lighted road	4	18.2%	Unknown	1	4.5%	North	7	14.9%
Rain	4	18.2%	Dawn	1	4.5%	Wet	5	22.7%	Northeast	1	2.1%
TOTAL:	22		Daylight	15	68.2%	TOTAL:	22		Northwest	1	2.1%
			TOTAL:	22					South	11	23.4%



Collision Diagram

1/1/2011 to 12/31/2011

Crash Route: IL064 | From MileStation 126.15 to 126.15 | County : Cook | Intersection Related: Intersections | *See Notes at End of Report.

<i>DIRP</i>	<i>Total</i>	<i>%</i>
Southwest	2	4.3%
West	14	29.8%
TOTAL:	47	



Collision Diagram

1/1/2011 to 12/31/2011

Crash Route: IL064 | From MileStation 126.15 to 126.15 | County : Cook | Intersection Related: Intersections | *See Notes at End of Report.

Notes

Current year and previous year data are not yet complete and are subject to change as more information becomes available. Calendar date selections include data based on the date of the crash. Year selections include data based on the statistical year in which the crash was processed.

The intersection-related field could be incorrect and affect the data on the report.

If a crash occurs between two municipalities, it may be coded to another city/county from what is on the crash report.

Crashes with incomplete location information are not included.

Areas where routes have more than one junction have been known to cause problems in determining accurate locations. Please notify us to verify the data for intersections with more than one junction.

For roadway segments which include the intersection of two routes, the intersection report may need to be run on the other route in order to get all the crashes.

Collision Diagram

1/1/2010 to 12/31/2010

Crash Route: IL064 | From MileStation 126.15 to 126.15 | County : Cook | Intersection Related: Intersections | *See Notes at End of Report.

Date	Weather	Roadway	----- A	Injuries B	----- C	Killed	Type of Crash	Light Condition	Mile	Vehicle Type	DIRP	Maneuver	Event 1	Loc 1	Event 2	Loc 2	Event 3	Loc 3	Unit
201001034052																			
1/5/2010 9:49 AM	Clear	Dry	0	0	0	0	11-Rear end	Daylight	126.15	Passenger	East	Straight ahead	Motor vehicle in traffic	On-pavement (roadway)	(UNK)	(UNK)	(UNK)	(UNK)	1
										Passenger	East	Slow/stop in traffic	Motor vehicle in traffic	On-pavement (roadway)	(UNK)	(UNK)	(UNK)	(UNK)	2
201001039228																			
1/15/2010 5:30 PM	Clear	Dry	0	0	0	0	12-Sideswipe same direction	Darkness/Lighted road	126.15	Passenger	South	Changing lanes	Motor vehicle in traffic	On-pavement (roadway)	(UNK)	(UNK)	(UNK)	(UNK)	1
										Passenger	South	Slow/stop in traffic	Motor vehicle in traffic	On-pavement (roadway)	(UNK)	(UNK)	(UNK)	(UNK)	2
201001044940																			
2/1/2010 8:18 AM	Clear	Dry	0	0	0	0	10-Turning	Daylight	126.15	Passenger	West	Turning left	Motor vehicle in traffic	Intersection	(UNK)	(UNK)	(UNK)	(UNK)	1
										Truck – single unit	South	Straight ahead	Motor vehicle in traffic	Intersection	(UNK)	(UNK)	(UNK)	(UNK)	2
201001075499																			
2/22/2010 7:15 AM	Unknown	Unknown	0	0	0	0	12-Sideswipe same direction	Daylight	126.15	Sport utility vehicle (SUV)	South	Unknown/N A	Motor vehicle in traffic	On-pavement (roadway)	(UNK)	(UNK)	(UNK)	(UNK)	1
										Passenger	South	Slow/stop in traffic	Motor vehicle in traffic	On-pavement (roadway)	(UNK)	(UNK)	(UNK)	(UNK)	2
201001096544																			
2/25/2010 8:30 PM	Clear	Dry	0	0	0	0	11-Rear end	Darkness/Lighted road	126.15	Sport utility vehicle (SUV)	West	Straight ahead	Motor vehicle in traffic	On-pavement (roadway)	(UNK)	(UNK)	(UNK)	(UNK)	1
										Passenger	West	Slow/stop in traffic	Motor vehicle in traffic	On-pavement (roadway)	(UNK)	(UNK)	(UNK)	(UNK)	2

Collision Diagram

1/1/2010 to 12/31/2010

Crash Route: IL064 | From MileStation 126.15 to 126.15 | County : Cook | Intersection Related: Intersections | *See Notes at End of Report.

Date	Weather	Roadway	----- A	Injuries B	----- C	Killed	Type of Crash	Light Condition	Mile	Vehicle Type	DIRP	Maneuver	Event 1	Loc 1	Event 2	Loc 2	Event 3	Loc 3	Unit
201001104661																			
3/6/2010 10:30 PM	Clear	Dry	0	0	0	0	11-Rear end	Darkness/Lighted road	126.15	Pickup	East	Straight ahead	Motor vehicle in traffic	On-pavement (roadway)	(UNK)	(UNK)	(UNK)	(UNK)	1
										Passenger	East	Slow/stop in traffic	Motor vehicle in traffic	On-pavement (roadway)	Motor vehicle in traffic	On-pavement (roadway)	(UNK)	(UNK)	2
										Passenger	East	Slow/stop in traffic	Motor vehicle in traffic	On-pavement (roadway)	Motor vehicle in traffic	On-pavement (roadway)	(UNK)	(UNK)	3
										Sport utility vehicle (SUV)	East	Slow/stop in traffic	Motor vehicle in traffic	On-pavement (roadway)	(UNK)	(UNK)	(UNK)	(UNK)	4
201001105984																			
3/22/2010 8:15 AM	Clear	Dry	0	0	0	0	11-Rear end	Daylight	126.15	Passenger	North	Straight ahead	Motor vehicle in traffic	On-pavement (roadway)	(UNK)	(UNK)	(UNK)	(UNK)	1
										Passenger	North	Slow/stop in traffic	Motor vehicle in traffic	On-pavement (roadway)	(UNK)	(UNK)	(UNK)	(UNK)	2
201001112344																			
3/23/2010 2:20 PM	Clear	Dry	0	1	0	0	10-Turning	Daylight	126.15	Pickup	Northeast	Turning left	Motor vehicle in traffic	On-pavement (roadway)	(UNK)	(UNK)	(UNK)	(UNK)	1
										Passenger	West	Straight ahead	Motor vehicle in traffic	On-pavement (roadway)	(UNK)	(UNK)	(UNK)	(UNK)	2
										Sport utility vehicle (SUV)	South	Slow/stop in traffic	Motor vehicle in traffic	On-pavement (roadway)	(UNK)	(UNK)	(UNK)	(UNK)	3
201001161548																			
5/1/2010 4:07 PM	Fog/smoke/haze	Dry	0	0	0	0	11-Rear end	Daylight	126.15	Pickup	East	Straight ahead	Motor vehicle in traffic	On-pavement (roadway)	(UNK)	(UNK)	(UNK)	(UNK)	1
										Passenger	East	Straight ahead	Motor vehicle in traffic	On-pavement (roadway)	(UNK)	(UNK)	(UNK)	(UNK)	2

Collision Diagram

1/1/2010 to 12/31/2010

Crash Route: IL064 | From MileStation 126.15 to 126.15 | County : Cook | Intersection Related: Intersections | *See Notes at End of Report.

Date	Weather	Roadway	----- A	Injuries B	----- C	Killed	Type of Crash	Light Condition	Mile	Vehicle Type	DIRP	Maneuver	Event 1	Loc 1	Event 2	Loc 2	Event 3	Loc 3	Unit
201001216628																			
6/24/2010 11:07 AM	Clear	Unknown	0	0	0	0	11-Rear end	Daylight	126.15	Passenger	North	Slow/stop in traffic	Motor vehicle in traffic	On-pavement (roadway)	(UNK)	(UNK)	(UNK)	(UNK)	1
										Passenger	North	Straight ahead	Motor vehicle in traffic	On-pavement (roadway)	(UNK)	(UNK)	(UNK)	(UNK)	2
201001235314																			
6/29/2010 12:30 PM	Clear	Dry	0	0	0	0	11-Rear end	Daylight	126.15	Van/mini van	West	Straight ahead	Motor vehicle in traffic	On-pavement (roadway)	(UNK)	(UNK)	(UNK)	(UNK)	1
										Sport utility vehicle (SUV)	West	Slow/stop in traffic	Motor vehicle in traffic	On-pavement (roadway)	(UNK)	(UNK)	(UNK)	(UNK)	2
201001228529																			
6/29/2010 5:17 PM	Clear	Dry	0	0	0	0	11-Rear end	Daylight	126.15	Sport utility vehicle (SUV)	North	Straight ahead	Motor vehicle in traffic	On-pavement (roadway)	(UNK)	(UNK)	(UNK)	(UNK)	1
										Tractor w/ semi-trailer	North	Slow/stop in traffic	Motor vehicle in traffic	On-pavement (roadway)	(UNK)	(UNK)	(UNK)	(UNK)	2
201001241425																			
7/10/2010 5:01 PM	Clear	Dry	0	0	3	0	10-Turning	Daylight	126.15	Van/mini van	South	Turning left	Motor vehicle in traffic	On-pavement (roadway)	(UNK)	(UNK)	(UNK)	(UNK)	1
										Van/mini van	North	Straight ahead	Motor vehicle in traffic	On-pavement (roadway)	(UNK)	(UNK)	(UNK)	(UNK)	2
201001252035																			
7/12/2010 5:59 AM	Clear	Dry	0	0	0	0	10-Turning	Daylight	126.15	Tractor w/ semi-trailer	East	Turning left	Motor vehicle in traffic	On-pavement (roadway)	(UNK)	(UNK)	(UNK)	(UNK)	1
										Sport utility vehicle (SUV)	East	Turning left	Motor vehicle in traffic	On-pavement (roadway)	(UNK)	(UNK)	(UNK)	(UNK)	2

Collision Diagram

1/1/2010 to 12/31/2010

Crash Route: IL064 | From MileStation 126.15 to 126.15 | County : Cook | Intersection Related: Intersections | *See Notes at End of Report.

Date	Weather	Roadway	----- A	Injuries B	----- C	Killed	Type of Crash	Light Condition	Mile	Vehicle Type	DIRP	Maneuver	Event 1	Loc 1	Event 2	Loc 2	Event 3	Loc 3	Unit
201001253095																			
7/22/2010 7:35 AM	Clear	Dry	0	0	0	0	11-Rear end	Dawn	126.15	Passenger	West	Straight ahead	Motor vehicle in traffic	On-pavement (roadway)	(UNK)	(UNK)	(UNK)	(UNK)	1
										Passenger	West	Straight ahead	Motor vehicle in traffic	On-pavement (roadway)	(UNK)	(UNK)	(UNK)	(UNK)	2
201001249745																			
7/26/2010 4:30 PM	Clear	Dry	0	0	0	0	11-Rear end	Daylight	126.15	Tractor w/ semi-trailer	East	Straight ahead	Motor vehicle in traffic	On-pavement (roadway)	(UNK)	(UNK)	(UNK)	(UNK)	1
										Passenger	East	Straight ahead	Motor vehicle in traffic	On-pavement (roadway)	(UNK)	(UNK)	(UNK)	(UNK)	2
201001274726																			
8/5/2010 3:09 PM	Clear	Dry	0	0	0	0	11-Rear end	Unknown	126.15	Van/mini van	South	Unknown/N A	Motor vehicle in traffic	On-pavement (roadway)	(UNK)	(UNK)	(UNK)	(UNK)	1
										Tractor w/ semi-trailer	South	Unknown/N A	Motor vehicle in traffic	On-pavement (roadway)	(UNK)	(UNK)	(UNK)	(UNK)	2
201001274235																			
8/11/2010 10:45 AM	Clear	Dry	0	0	0	0	11-Rear end	Daylight	126.15	Passenger	North	Slow/stop in traffic	Motor vehicle in traffic	On-pavement (roadway)	(UNK)	(UNK)	(UNK)	(UNK)	2
										Sport utility vehicle (SUV)	North	Straight ahead	Motor vehicle in traffic	On-pavement (roadway)	(UNK)	(UNK)	(UNK)	(UNK)	1
201001274239																			
8/11/2010 11:44 AM	Clear	Dry	0	0	0	0	10-Turning	Daylight	126.15	Van/mini van	South	Turning left	Motor vehicle in traffic	On-pavement (roadway)	Ran off the roadway	(UNK)	(UNK)	(UNK)	1
										Passenger	South	Turning left	Motor vehicle in traffic	On-pavement (roadway)	(UNK)	(UNK)	(UNK)	(UNK)	2

Collision Diagram

1/1/2010 to 12/31/2010

Crash Route: IL064 | From MileStation 126.15 to 126.15 | County : Cook | Intersection Related: Intersections | *See Notes at End of Report.

Date	Weather	Roadway	----- A	Injuries B	----- C	Killed	Type of Crash	Light Condition	Mile	Vehicle Type	DIRP	Maneuver	Event 1	Loc 1	Event 2	Loc 2	Event 3	Loc 3	Unit
201001314557																			
9/7/2010 9:07 AM	Clear	Dry	0	0	0	0	11-Rear end	Daylight	126.15	Passenger	East	Straight ahead	Motor vehicle in traffic	On-pavement (roadway)	(UNK)	(UNK)	(UNK)	(UNK)	1
										Passenger	East	Slow/stop in traffic	Motor vehicle in traffic	On-pavement (roadway)	(UNK)	(UNK)	(UNK)	(UNK)	2
201001328249																			
9/22/2010 5:14 PM	Clear	Dry	0	0	0	0	11-Rear end	Dusk	126.15	Passenger	East	Slow/stop in traffic	Motor vehicle in traffic	On-pavement (roadway)	(UNK)	(UNK)	(UNK)	(UNK)	1
										Passenger	East	Slow/stop in traffic	Motor vehicle in traffic	On-pavement (roadway)	(UNK)	(UNK)	(UNK)	(UNK)	2
										Passenger	East	Slow/stop in traffic	Motor vehicle in traffic	On-pavement (roadway)	(UNK)	(UNK)	(UNK)	(UNK)	3
201001332547																			
9/27/2010 9:06 AM	Clear	Dry	0	0	0	0	11-Rear end	Daylight	126.15	Passenger	West	Straight ahead	Motor vehicle in traffic	On-pavement (roadway)	(UNK)	(UNK)	(UNK)	(UNK)	1
										Passenger	West	Straight ahead	Motor vehicle in traffic	On-pavement (roadway)	(UNK)	(UNK)	(UNK)	(UNK)	2
201001332678																			
9/30/2010 7:36 AM	Clear	Dry	0	0	0	0	12-Sideswipe same direction	Daylight	126.15	Passenger	North	Passing/over taking	Motor vehicle in traffic	On-pavement (roadway)	(UNK)	(UNK)	(UNK)	(UNK)	1
										Sport utility vehicle (SUV)	North	Slow/stop in traffic	Motor vehicle in traffic	On-pavement (roadway)	(UNK)	(UNK)	(UNK)	(UNK)	2
201001344540																			
10/7/2010 2:00 PM	Clear	Dry	0	0	0	0	10-Turning	Daylight	126.15	Passenger	South	Turning left	Motor vehicle in traffic	Intersection	(UNK)	(UNK)	(UNK)	(UNK)	1
										Passenger	North	Straight ahead	Motor vehicle in traffic	Intersection	(UNK)	(UNK)	(UNK)	(UNK)	2

Collision Diagram

1/1/2010 to 12/31/2010

Crash Route: IL064 | From MileStation 126.15 to 126.15 | County : Cook | Intersection Related: Intersections | *See Notes at End of Report.

Date	Weather	Roadway	----- A	Injuries B	----- C	Killed	Type of Crash	Light Condition	Mile	Vehicle Type	DIRP	Maneuver	Event 1	Loc 1	Event 2	Loc 2	Event 3	Loc 3	Unit
201001357910																			
10/14/2010 12:46 PM	Clear	Dry	0	0	0	0	11-Rear end	Daylight	126.15	Van/mini van	West	Slow/stop in traffic	Motor vehicle in traffic	On-pavement (roadway)	(UNK)	(UNK)	(UNK)	(UNK)	1
										Passenger	West	Straight ahead	Motor vehicle in traffic	On-pavement (roadway)	(UNK)	(UNK)	(UNK)	(UNK)	2
201001387359																			
10/29/2010 4:11 PM	Clear	Dry	0	0	2	0	11-Rear end	Daylight	126.15	Passenger	East	Straight ahead	Motor vehicle in traffic	On-pavement (roadway)	(UNK)	(UNK)	(UNK)	(UNK)	1
										Passenger	East	Straight ahead	Motor vehicle in traffic	On-pavement (roadway)	(UNK)	(UNK)	(UNK)	(UNK)	2
201001387405																			
11/2/2010 1:44 AM	Clear	Dry	0	0	0	0	10-Turning	Daylight	126.15	Tractor w/ semi-trailer	Northwest	Turning left	Motor vehicle in traffic	On-pavement (roadway)	(UNK)	(UNK)	(UNK)	(UNK)	1
										Truck - single unit	North	Straight ahead	Motor vehicle in traffic	On-pavement (roadway)	(UNK)	(UNK)	(UNK)	(UNK)	2
201001378163																			
11/20/2010 11:14 PM	Clear	Dry	0	0	0	0	10-Turning	Darkness/Lighted road	126.15	Tractor w/o semi-trailer	Northeast	Turning right	Motor vehicle in traffic	On-pavement (roadway)	(UNK)	(UNK)	(UNK)	(UNK)	1
										Passenger	Northeast	Turning right	Motor vehicle in traffic	On-pavement (roadway)	(UNK)	(UNK)	(UNK)	(UNK)	2
201001412076																			
11/23/2010 9:25 AM	Clear	Dry	0	0	0	0	11-Rear end	Daylight	126.15	Passenger	South	Straight ahead	Motor vehicle in traffic	On-pavement (roadway)	(UNK)	(UNK)	(UNK)	(UNK)	1
										Van/mini van	South	Slow/stop in traffic	Motor vehicle in traffic	On-pavement (roadway)	(UNK)	(UNK)	(UNK)	(UNK)	2

Collision Diagram

1/1/2010 to 12/31/2010

Crash Route: IL064 | From MileStation 126.15 to 126.15 | County : Cook | Intersection Related: Intersections | *See Notes at End of Report.

Date	Weather	Roadway	----- A	Injuries B	----- C	Killed	Type of Crash	Light Condition	Mile	Vehicle Type	DIRP	Maneuver	Event 1	Loc 1	Event 2	Loc 2	Event 3	Loc 3	Unit
201001416449																			
11/27/2010 10:13 AM	Clear	Dry	0	0	0	0	10-Turning	Daylight	126.15	Passenger	East	Turning left	Motor vehicle in traffic	On-pavement (roadway)	(UNK)	(UNK)	(UNK)	(UNK)	1
										Passenger	West	Straight ahead	Motor vehicle in traffic	On-pavement (roadway)	(UNK)	(UNK)	(UNK)	(UNK)	2
201001416677																			
12/1/2010 6:25 AM	Snow	Dry	0	0	0	0	10-Turning	Darkness/Lighted road	126.15	Passenger	North	Turning left	Motor vehicle in traffic	Intersection	(UNK)	(UNK)	(UNK)	(UNK)	1
										Pickup	West	Straight ahead	Motor vehicle in traffic	Intersection	(UNK)	(UNK)	(UNK)	(UNK)	2
201001383304																			
12/1/2010 2:55 PM	Clear	Dry	0	0	0	0	11-Rear end	Daylight	126.15	Passenger	West	Straight ahead	Motor vehicle in traffic	On-pavement (roadway)	(UNK)	(UNK)	(UNK)	(UNK)	1
										Tractor w/ semi-trailer	West	Slow/stop in traffic	Motor vehicle in traffic	On-pavement (roadway)	(UNK)	(UNK)	(UNK)	(UNK)	2

Collision Diagram

1/1/2010 to 12/31/2010

Crash Route: IL064 | From MileStation 126.15 to 126.15 | County : Cook | Intersection Related: Intersections | *See Notes at End of Report.

TOTAL CRASHES	FATAL CRASHES	A INJURY CRASHES	B INJURY CRASHES	C INJURY CRASHES	PROPERTY DAMAGE CRASHES	TOTAL KILLED	TOTAL INJURED	A INJURIES	B INJURIES	C INJURIES
32	0	0	1	2	29	0	6	0	1	5

Type of Crash	Total	%	Day of Wk	Total	%	Hour of Day	Total	%	Vehicle Type	Total	%
10-Turning	10	31.3%	Monday	6	18.8%	01 AM	1	3.1%	Passenger	39	57.4%
11-Rear end	19	59.4%	Tuesday	7	21.9%	05 AM	1	3.1%	Pickup	4	5.9%
12-Sideswipe same direction	3	9.4%	Wednesday	5	15.6%	06 AM	1	3.1%	Sport utility vehicle (SUV)	9	13.2%
TOTAL:	32		Thursday	7	21.9%	07 AM	3	9.4%	Tractor w/ semi-trailer	6	8.8%
			Friday	2	6.3%	08 AM	2	6.3%	Tractor w/o semi-trailer	1	1.5%
			Saturday	5	15.6%	09 AM	4	12.5%	Truck – single unit	2	2.9%
			TOTAL:	32		10 AM	2	6.3%	Van/mini van	7	10.3%
						11 AM	2	6.3%	TOTAL:	68	
						Noon	2	6.3%			
						2 PM	3	9.4%			
						3 PM	1	3.1%			
						4 PM	3	9.4%			
						5 PM	4	12.5%			
						8 PM	1	3.1%			
						10 PM	1	3.1%			
						11 PM	1	3.1%			
						TOTAL:	32				

Weather Cond	Total	%	Light Cond	Total	%	Road Surface	Total	%	DIRP	Total	%
Clear	29	90.6%	Darkness/Lighted road	5	15.6%	Dry	30	93.8%	East	20	29.4%
Fog/smoke/haze	1	3.1%	Dawn	1	3.1%	Unknown	2	6.3%	North	14	20.6%

Collision Diagram

1/1/2010 to 12/31/2010

Crash Route: IL064 | From MileStation 126.15 to 126.15 | County : Cook | Intersection Related: Intersections | *See Notes at End of Report.

<i>Weather Cond</i>	<i>Total</i>	<i>%</i>	<i>Light Cond</i>	<i>Total</i>	<i>%</i>	<i>TOTAL:</i>		<i>DIRP</i>	<i>Total</i>	<i>%</i>
Snow	1	3.1%	Daylight	24	75.0%		32	Northeast	3	4.4%
Unknown	1	3.1%	Dusk	1	3.1%			Northwest	1	1.5%
TOTAL:	32		Unknown	1	3.1%			South	14	20.6%
			TOTAL:	32				West	16	23.5%
								TOTAL:	68	

Collision Diagram

1/1/2010 to 12/31/2010

Crash Route: IL064 | From MileStation 126.15 to 126.15 | County : Cook | Intersection Related: Intersections | *See Notes at End of Report.

Notes

Current year and previous year data are not yet complete and are subject to change as more information becomes available. Calendar date selections include data based on the date of the crash. Year selections include data based on the statistical year in which the crash was processed.

The intersection-related field could be incorrect and affect the data on the report.

If a crash occurs between two municipalities, it may be coded to another city/county from what is on the crash report.

Crashes with incomplete location information are not included.

Areas where routes have more than one junction have been known to cause problems in determining accurate locations. Please notify us to verify the data for intersections with more than one junction.

For roadway segments which include the intersection of two routes, the intersection report may need to be run on the other route in order to get all the crashes.

Collision Diagram

1/1/2009 to 12/31/2009

Crash Route: IL064 | From MileStation 126.15 to 126.15 | County : Cook | Intersection Related: Intersections | *See Notes at End of Report.

Date	Weather	Roadway	----- A	Injuries B	----- C	Killed	Type of Crash	Light Condition	Mile	Vehicle Type	DIRP	Maneuver	Event 1	Loc 1	Event 2	Loc 2	Event 3	Loc 3	Unit
200901027930																			
1/3/2009 10:05 PM	Rain	Wet	0	1	0	0	15-Angle	Darkness/Lighted road	126.15	Passenger	East	Straight ahead	Motor vehicle in traffic	On-pavement (roadway)	(UNK)	(UNK)	(UNK)	(UNK)	1
										Passenger	South	Straight ahead	Motor vehicle in traffic	On-pavement (roadway)	(UNK)	(UNK)	(UNK)	(UNK)	2
200901048336																			
2/2/2009 6:17 PM	Clear	Wet	0	0	0	0	10-Turning	Darkness/Lighted road	126.15	Passenger	Northwest	Turning left	Motor vehicle in traffic	On-pavement (roadway)	(UNK)	(UNK)	(UNK)	(UNK)	1
										Passenger	South	Straight ahead	Motor vehicle in traffic	On-pavement (roadway)	(UNK)	(UNK)	(UNK)	(UNK)	2
200901198629																			
3/4/2009 2:38 PM	Clear	Dry	0	0	0	0	10-Turning	Daylight	126.15	Sport utility vehicle (SUV)	Northeast	Turning left	Motor vehicle in traffic	On-pavement (roadway)	(UNK)	(UNK)	(UNK)	(UNK)	1
										Passenger	West	Straight ahead	Motor vehicle in traffic	On-pavement (roadway)	(UNK)	(UNK)	(UNK)	(UNK)	2
										Pickup	South	Slow/stop – left turn	Motor vehicle in traffic	On-pavement (roadway)	(UNK)	(UNK)	(UNK)	(UNK)	3
200901130808																			
4/10/2009 4:23 PM	Clear	Dry	0	0	0	0	10-Turning	Daylight	126.15	Sport utility vehicle (SUV)	East	Straight ahead	Motor vehicle in traffic	On-pavement (roadway)	(UNK)	(UNK)	(UNK)	(UNK)	1
										Passenger	Southwest	Turning left	Motor vehicle in traffic	On-pavement (roadway)	(UNK)	(UNK)	(UNK)	(UNK)	2
200901128050																			
4/11/2009 6:07 PM	Clear	Dry	0	0	0	0	11-Rear end	Daylight	126.15	Unknown/NA	West	Unknown/NA	Motor vehicle in traffic	On-pavement (roadway)	(UNK)	(UNK)	(UNK)	(UNK)	1
										Motorcycle (over 150cc)	West	Straight ahead	Motor vehicle in traffic	On-pavement (roadway)	(UNK)	(UNK)	(UNK)	(UNK)	2

Collision Diagram

1/1/2009 to 12/31/2009

Crash Route: IL064 | From MileStation 126.15 to 126.15 | County : Cook | Intersection Related: Intersections | *See Notes at End of Report.

Date	Weather	Roadway	----- A	Injuries B	----- C	Killed	Type of Crash	Light Condition	Mile	Vehicle Type	DIRP	Maneuver	Event 1	Loc 1	Event 2	Loc 2	Event 3	Loc 3	Unit
200901128065																			
4/16/2009 5:12 PM	Clear	Dry	0	0	0	0	11-Rear end	Daylight	126.15	Passenger	North	Slow/stop – left turn	Motor vehicle in traffic	On-pavement (roadway)	(UNK)	(UNK)	(UNK)	(UNK)	1
										Pickup	North	Slow/stop – left turn	Motor vehicle in traffic	On-pavement (roadway)	(UNK)	(UNK)	(UNK)	(UNK)	2
200901140271																			
4/21/2009 8:23 AM	Rain	Wet	0	0	0	0	11-Rear end	Daylight	126.15	Passenger	South	Driving wrong way	Motor vehicle in traffic	On-pavement (roadway)	(UNK)	(UNK)	(UNK)	(UNK)	1
										Passenger	South	Straight ahead	Motor vehicle in traffic	On-pavement (roadway)	(UNK)	(UNK)	(UNK)	(UNK)	2
200901154329																			
4/28/2009 12:58 AM	Rain	Wet	0	0	0	0	11-Rear end	Darkness/Lighted road	126.15	Unknown/NA	South	Straight ahead	Motor vehicle in traffic	On-pavement (roadway)	(UNK)	(UNK)	(UNK)	(UNK)	1
										Passenger	South	Straight ahead	Motor vehicle in traffic	On-pavement (roadway)	(UNK)	(UNK)	(UNK)	(UNK)	2
										Passenger	South	Straight ahead	Motor vehicle in traffic	On-pavement (roadway)	(UNK)	(UNK)	(UNK)	(UNK)	3
200901173565																			
5/8/2009 4:15 PM	Clear	Dry	0	0	0	0	11-Rear end	Daylight	126.15	Sport utility vehicle (SUV)	West	Slow/stop in traffic	Motor vehicle in traffic	On-pavement (roadway)	(UNK)	(UNK)	(UNK)	(UNK)	1
										Pickup	West	Slow/stop in traffic	Motor vehicle in traffic	On-pavement (roadway)	(UNK)	(UNK)	(UNK)	(UNK)	2
200901209909																			
6/8/2009 2:31 PM	Clear	Dry	0	0	0	0	11-Rear end	Daylight	126.15	Sport utility vehicle (SUV)	East	Straight ahead	Motor vehicle in traffic	On-pavement (roadway)	(UNK)	(UNK)	(UNK)	(UNK)	1
										Passenger	East	Straight ahead	Motor vehicle in traffic	On-pavement (roadway)	(UNK)	(UNK)	(UNK)	(UNK)	2

Collision Diagram

1/1/2009 to 12/31/2009

Crash Route: IL064 | From MileStation 126.15 to 126.15 | County : Cook | Intersection Related: Intersections | *See Notes at End of Report.

Date	Weather	Roadway	----- A	Injuries B	----- C	Killed	Type of Crash	Light Condition	Mile	Vehicle Type	DIRP	Maneuver	Event 1	Loc 1	Event 2	Loc 2	Event 3	Loc 3	Unit
200901271589																			
7/1/2009 3:39 PM	Clear	Dry	0	0	0	0	15-Angle	Daylight	126.15	Sport utility vehicle (SUV)	Unknown	Unknown/N A	Motor vehicle in traffic	Intersection	(UNK)	(UNK)	(UNK)	(UNK)	1
										Sport utility vehicle (SUV)	Unknown	Slow/stop - left turn	Motor vehicle in traffic	Intersection	(UNK)	(UNK)	(UNK)	(UNK)	2
200901247928																			
7/11/2009 11:30 PM	Clear	Dry	0	0	1	0	10-Turning	Darkness/Lighted road	126.15	Sport utility vehicle (SUV)	Southwest	Turning left	Motor vehicle in traffic	Intersection	Hit Parked vehicle	Off pavement - right	(UNK)	(UNK)	1
										Truck - single unit	East	Straight ahead	Motor vehicle in traffic	Intersection	Motor vehicle in traffic	Intersection	(UNK)	(UNK)	2
										Sport utility vehicle (SUV)	North	Slow/stop in traffic	Motor vehicle in traffic	Intersection	Motor vehicle in traffic	Intersection	(UNK)	(UNK)	3
										Passenger	North	Straight ahead	Motor vehicle in traffic	Intersection	Motor vehicle in traffic	Intersection	(UNK)	(UNK)	4
										Passenger	North	Slow/stop in traffic	Motor vehicle in traffic	Intersection	(UNK)	(UNK)	(UNK)	(UNK)	5
										Passenger	Unknown	Parked	Motor vehicle in traffic	Other	(UNK)	(UNK)	(UNK)	(UNK)	6
200901300885																			
8/18/2009 8:41 AM	Clear	Dry	0	0	0	0	11-Rear end	Daylight	126.15	Passenger	West	Straight ahead	Motor vehicle in traffic	On-pavement (roadway)	(UNK)	(UNK)	(UNK)	(UNK)	1
										Pickup	West	Slow/stop in traffic	Motor vehicle in traffic	On-pavement (roadway)	(UNK)	(UNK)	(UNK)	(UNK)	2
200901317397																			
8/29/2009 3:58 AM	Clear	Dry	0	0	0	0	11-Rear end	Darkness	126.15	Passenger	East	Straight ahead	Motor vehicle in traffic	On-pavement (roadway)	(UNK)	(UNK)	(UNK)	(UNK)	1
										Van/mini van	East	Parked in traffic lane	Motor vehicle in traffic	On-pavement (roadway)	(UNK)	(UNK)	(UNK)	(UNK)	2

Collision Diagram

1/1/2009 to 12/31/2009

Crash Route: IL064 | From MileStation 126.15 to 126.15 | County : Cook | Intersection Related: Intersections | *See Notes at End of Report.

Date	Weather	Roadway	----- A	Injuries B	----- C	Killed	Type of Crash	Light Condition	Mile	Vehicle Type	DIRP	Maneuver	Event 1	Loc 1	Event 2	Loc 2	Event 3	Loc 3	Unit
200901313232																			
9/2/2009 7:15 PM	Clear	Dry	0	0	0	0	11-Rear end	Daylight	126.15	Sport utility vehicle (SUV)	South	Straight ahead	Motor vehicle in traffic	On-pavement (roadway)	(UNK)	(UNK)	(UNK)	(UNK)	1
										Passenger	South	Straight ahead	Motor vehicle in traffic	On-pavement (roadway)	(UNK)	(UNK)	(UNK)	(UNK)	2
200901338017																			
9/12/2009 2:00 PM	Clear	Dry	0	0	0	0	10-Turning	Daylight	126.15	Passenger	East	Turning left	Motor vehicle in traffic	On-pavement (roadway)	(UNK)	(UNK)	(UNK)	(UNK)	1
										Passenger	West	Straight ahead	Motor vehicle in traffic	On-pavement (roadway)	(UNK)	(UNK)	(UNK)	(UNK)	2
200901353665																			
10/3/2009 3:26 AM	Rain	Wet	0	0	0	0	11-Rear end	Darkness/Lighted road	126.15	Sport utility vehicle (SUV)	South	Straight ahead	Motor vehicle in traffic	On-pavement (roadway)	(UNK)	(UNK)	(UNK)	(UNK)	1
										Sport utility vehicle (SUV)	South	Slow/stop in traffic	Motor vehicle in traffic	On-pavement (roadway)	(UNK)	(UNK)	(UNK)	(UNK)	2
200901386996																			
10/15/2009 7:30 PM	Rain	Wet	0	0	0	0	10-Turning	Darkness/Lighted road	126.15	Passenger	West	Turning left	Motor vehicle in traffic	Intersection	(UNK)	(UNK)	(UNK)	(UNK)	1
										Pickup	West	Turning left	Motor vehicle in traffic	Intersection	(UNK)	(UNK)	(UNK)	(UNK)	2
200901378411																			
10/16/2009 9:04 AM	Rain	Wet	0	0	0	0	10-Turning	Daylight	126.15	Passenger	Southwest	Turning left	Motor vehicle in traffic	On-pavement (roadway)	(UNK)	(UNK)	(UNK)	(UNK)	1
										Tractor w/ semi-trailer	West	Turning left	Motor vehicle in traffic	On-pavement (roadway)	(UNK)	(UNK)	(UNK)	(UNK)	2

Collision Diagram

1/1/2009 to 12/31/2009

Crash Route: IL064 | From MileStation 126.15 to 126.15 | County : Cook | Intersection Related: Intersections | *See Notes at End of Report.

Date	Weather	Roadway	----- A	Injuries B	----- C	Killed	Type of Crash	Light Condition	Mile	Vehicle Type	DIRP	Maneuver	Event 1	Loc 1	Event 2	Loc 2	Event 3	Loc 3	Unit
200901385160																			
10/28/2009 10:18 AM	Clear	Wet	0	0	0	0	11-Rear end	Daylight	126.15	Van/mini van	West	Straight ahead	Motor vehicle in traffic	On-pavement (roadway)	(UNK)	(UNK)	(UNK)	(UNK)	1
										Passenger	West	Slow/stop in traffic	Motor vehicle in traffic	On-pavement (roadway)	(UNK)	(UNK)	(UNK)	(UNK)	2
										Passenger	West	Slow/stop in traffic	Motor vehicle in traffic	On-pavement (roadway)	(UNK)	(UNK)	(UNK)	(UNK)	3
200901415180																			
10/30/2009 12:06 PM	Rain	Wet	0	0	0	0	15-Angle	Daylight	126.15	Passenger	South	Straight ahead	Motor vehicle in traffic	On-pavement (roadway)	(UNK)	(UNK)	(UNK)	(UNK)	1
										Sport utility vehicle (SUV)	East	Straight ahead	Motor vehicle in traffic	On-pavement (roadway)	(UNK)	(UNK)	(UNK)	(UNK)	2
200901415205																			
10/30/2009 3:10 PM	Rain	Wet	0	0	0	0	11-Rear end	Daylight	126.15	Passenger	South	Straight ahead	Motor vehicle in traffic	On-pavement (roadway)	(UNK)	(UNK)	(UNK)	(UNK)	1
										Sport utility vehicle (SUV)	South	Slow/stop in traffic	Motor vehicle in traffic	On-pavement (roadway)	(UNK)	(UNK)	(UNK)	(UNK)	2
200901445715																			
12/5/2009 11:38 PM	Clear	Dry	0	0	0	0	11-Rear end	Darkness/Lighted road	126.15	Sport utility vehicle (SUV)	South	Slow/stop - left turn	Motor vehicle in traffic	On-pavement (roadway)	(UNK)	(UNK)	(UNK)	(UNK)	1
										Pickup	South	Slow/stop - left turn	Motor vehicle in traffic	On-pavement (roadway)	(UNK)	(UNK)	(UNK)	(UNK)	2
200901445606																			
12/12/2009 12:30 AM	Rain	Dry	0	0	0	0	10-Turning	Darkness/Lighted road	126.15	Passenger	South	Straight ahead	Motor vehicle in traffic	On-pavement (roadway)	(UNK)	(UNK)	(UNK)	(UNK)	1
										Passenger	South	Turning left	Motor vehicle in traffic	On-pavement (roadway)	(UNK)	(UNK)	(UNK)	(UNK)	2

Collision Diagram

1/1/2009 to 12/31/2009

Crash Route: IL064 | From MileStation 126.15 to 126.15 | County : Cook | Intersection Related: Intersections | *See Notes at End of Report.

Date	Weather	Roadway	----- A	Injuries B	----- C	Killed	Type of Crash	Light Condition	Mile	Vehicle Type	DIRP	Maneuver	Event 1	Loc 1	Event 2	Loc 2	Event 3	Loc 3	Unit
200901445496																			
12/12/2009 2:56 AM	Sleet/hail	Ice	0	0	0	0	11-Rear end	Darkness/Lighted road	126.15	Passenger	South	Straight ahead	Motor vehicle in traffic	On-pavement (roadway)	(UNK)	(UNK)	(UNK)	(UNK)	1
										Passenger	South	Straight ahead	Motor vehicle in traffic	On-pavement (roadway)	(UNK)	(UNK)	(UNK)	(UNK)	2
200901454236																			
12/22/2009 5:49 PM	Snow	Snow or slush	0	0	0	0	10-Turning	Darkness/Lighted road	126.15	Sport utility vehicle (SUV)	East	Turning left	Motor vehicle in traffic	On-pavement (roadway)	(UNK)	(UNK)	(UNK)	(UNK)	1
										Sport utility vehicle (SUV)	North	Straight ahead	Motor vehicle in traffic	On-pavement (roadway)	(UNK)	(UNK)	(UNK)	(UNK)	2
200901457723																			
12/24/2009 11:30 AM	Rain	Snow or slush	0	0	0	0	11-Rear end	Daylight	126.15	Unknown/NA	South	Straight ahead	Motor vehicle in traffic	On-pavement (roadway)	(UNK)	(UNK)	(UNK)	(UNK)	1
										Passenger	South	Straight ahead	Motor vehicle in traffic	On-pavement (roadway)	(UNK)	(UNK)	(UNK)	(UNK)	2

Collision Diagram

1/1/2009 to 12/31/2009

Crash Route: IL064 | From MileStation 126.15 to 126.15 | County : Cook | Intersection Related: Intersections | *See Notes at End of Report.

TOTAL CRASHES	FATAL CRASHES	A INJURY CRASHES	B INJURY CRASHES	C INJURY CRASHES	PROPERTY DAMAGE CRASHES	TOTAL KILLED	TOTAL INJURED	A INJURIES	B INJURIES	C INJURIES
<u>27</u>	<u>0</u>	<u>0</u>	<u>1</u>	<u>1</u>	<u>25</u>	<u>0</u>	<u>2</u>	<u>0</u>	<u>1</u>	<u>1</u>

Type of Crash	Total	%	Day of Wk	Total	%	Hour of Day	Total	%	Vehicle Type	Total	%
10-Turning	9	33.3%	Monday	2	7.4%	Midnight	2	7.4%	Motorcycle (over 150cc)	1	1.6%
11-Rear end	15	55.6%	Tuesday	4	14.8%	02 AM	1	3.7%	Passenger	31	50.8%
15-Angle	3	11.1%	Wednesday	4	14.8%	03 AM	2	7.4%	Pickup	6	9.8%
TOTAL:	27		Thursday	3	11.1%	08 AM	2	7.4%	Sport utility vehicle (SUV)	16	26.2%
			Friday	5	18.5%	09 AM	1	3.7%	Tractor w/ semi-trailer	1	1.6%
			Saturday	9	33.3%	10 AM	1	3.7%	Truck – single unit	1	1.6%
			TOTAL:	27		11 AM	1	3.7%	Unknown/NA	3	4.9%
						Noon	1	3.7%	Van/mini van	2	3.3%
						2 PM	3	11.1%	TOTAL:	61	
						3 PM	2	7.4%			
						4 PM	2	7.4%			
						5 PM	2	7.4%			
						6 PM	2	7.4%			
						7 PM	2	7.4%			
						10 PM	1	3.7%			
						11 PM	2	7.4%			
						TOTAL:	27				

Weather Cond	Total	%	Light Cond	Total	%	Road Surface	Total	%	DIRP	Total	%
Clear	15	55.6%	Darkness	1	3.7%	Dry	14	51.9%	East	10	16.4%
Rain	10	37.0%	Darkness/Lighted road	10	37.0%	Ice	1	3.7%	North	6	9.8%

Collision Diagram

1/1/2009 to 12/31/2009

Crash Route: IL064 | From MileStation 126.15 to 126.15 | County : Cook | Intersection Related: Intersections | *See Notes at End of Report.

<i>Weather Cond</i>	<i>Total</i>	<i>%</i>	<i>Light Cond</i>	<i>Total</i>	<i>%</i>	<i>Road Surface</i>	<i>Total</i>	<i>%</i>	<i>DIRP</i>	<i>Total</i>	<i>%</i>
Sleet/hail	1	3.7%	Daylight	16	59.3%	Snow or slush	2	7.4%	Northeast	1	1.6%
Snow	1	3.7%	TOTAL:	27		Wet	10	37.0%	Northwest	1	1.6%
TOTAL:	27					TOTAL:	27		South	23	37.7%
									Southwest	3	4.9%
									Unknown	3	4.9%
									West	14	23.0%
									TOTAL:	61	

Collision Diagram

1/1/2009 to 12/31/2009

Crash Route: IL064 | From MileStation 126.15 to 126.15 | County : Cook | Intersection Related: Intersections | *See Notes at End of Report.

Notes

Current year and previous year data are not yet complete and are subject to change as more information becomes available. Calendar date selections include data based on the date of the crash. Year selections include data based on the statistical year in which the crash was processed.

The intersection-related field could be incorrect and affect the data on the report.

If a crash occurs between two municipalities, it may be coded to another city/county from what is on the crash report.

Crashes with incomplete location information are not included.

Areas where routes have more than one junction have been known to cause problems in determining accurate locations. Please notify us to verify the data for intersections with more than one junction.

For roadway segments which include the intersection of two routes, the intersection report may need to be run on the other route in order to get all the crashes.

Collision Diagram

1/1/2008 to 12/31/2008

Crash Route: IL064 | From MileStation 126.11 to 126.11 | County : Cook | Intersection Related: Intersections | *See Notes at End of Report.

Date	Weather	Roadway	----- A	----- B1 f]Yg 6	----- C	Killed	Type of Crash	Light Condition	Mile	Vehicle Type	DIRP	Maneuver	Event 1	Loc 1	Event 2	Loc 2	Event 3	Loc 3	Unit
80635899																			
2/12/2008 7:07 PM	Snow	Snow or slush	0	0	0	0	12-Sideswipe same direction	Darkness	126.11	Passenger	West	Straight ahead	Motor vehicle in traffic	On-pavement (roadway)	(UNK)	(UNK)	(UNK)	(UNK)	2
										Tractor w/ semi-trailer	West	Straight ahead	Motor vehicle in traffic	On-pavement (roadway)	(UNK)	(UNK)	(UNK)	(UNK)	1
80704653																			
2/13/2008 9:18 PM	Clear	Dry	0	0	0	0	11-Rear end	Darkness, lighted road	126.11	Passenger	West	Straight ahead	Motor vehicle in traffic	On-pavement (roadway)	(UNK)	(UNK)	(UNK)	(UNK)	2
										Passenger	West	Straight ahead	Motor vehicle in traffic	On-pavement (roadway)	(UNK)	(UNK)	(UNK)	(UNK)	1
80703879																			
2/14/2008 7:32 PM	Clear	Dry	0	0	0	0	12-Sideswipe same direction	Darkness	126.11	Passenger	South	Straight ahead	Motor vehicle in traffic	On-pavement (roadway)	(UNK)	(UNK)	(UNK)	(UNK)	2
										Passenger	South	Changing lanes	Motor vehicle in traffic	On-pavement (roadway)	(UNK)	(UNK)	(UNK)	(UNK)	1
80700305																			
2/17/2008 10:11 PM	Rain	Dry	0	0	0	0	8-Other non collision	Darkness, lighted road	126.11	Passenger	East	Straight ahead	Other non-collision	On-pavement (roadway)	(UNK)	(UNK)	(UNK)	(UNK)	2
80945546																			
2/29/2008 11:55 AM	Clear	Unknown	0	2	0	0	10-Turning	Daylight	126.11	Passenger	South	Straight ahead	Motor vehicle in traffic	On-pavement (roadway)	(UNK)	(UNK)	(UNK)	(UNK)	2
										Sport utility vehicle (SUV)	South	Turning left	Motor vehicle in traffic	On-pavement (roadway)	(UNK)	(UNK)	(UNK)	(UNK)	1
80944309																			
3/1/2008 5:17 PM	Clear	Unknown	0	0	0	0	10-Turning	Dusk	126.11	Passenger	West	Turning left	Motor vehicle in traffic	On-pavement (roadway)	(UNK)	(UNK)	(UNK)	(UNK)	2
										Passenger	East	Turning right	Motor vehicle in traffic	On-pavement (roadway)	(UNK)	(UNK)	(UNK)	(UNK)	1
80944341																			
3/3/2008 11:38 AM	Rain	Wet	0	0	0	0	11-Rear end	Daylight	126.11	Sport utility vehicle (SUV)	North	Straight ahead	Motor vehicle in traffic	On-pavement (roadway)	(UNK)	(UNK)	(UNK)	(UNK)	2

Collision Diagram

1/1/2008 to 12/31/2008

Crash Route: IL064 | From MileStation 126.11 to 126.11 | County : Cook | Intersection Related: Intersections | *See Notes at End of Report.

Date	Weather	Roadway	----- A	----- B1 f]Yg 6	----- C	Killed	Type of Crash	Light Condition	Mile	Vehicle Type	DIRP	Maneuver	Event 1	Loc 1	Event 2	Loc 2	Event 3	Loc 3	Unit
3/3/2008 11:38 AM	Rain	Wet	0	0	0	0	11-Rear end	Daylight	126.11	Passenger	North	Straight ahead	Motor vehicle in traffic	On-pavement (roadway)	(UNK)	(UNK)	(UNK)	(UNK)	1
80944515																			
3/6/2008 12:30 PM	Clear	Dry	0	0	0	0	11-Rear end	Daylight	126.11	Sport utility vehicle (SUV)	Southwest	Slow/stop - right turn	Motor vehicle in traffic	On-pavement (roadway)	(UNK)	(UNK)	(UNK)	(UNK)	2
										Passenger	Southwest	Slow/stop - right turn	Motor vehicle in traffic	On-pavement (roadway)	(UNK)	(UNK)	(UNK)	(UNK)	1
81183774																			
3/21/2008 2:00 PM	Sleet/hail	Dry	0	0	0	0	10-Turning	Darkness, lighted road	126.11	Passenger	West	Straight ahead	Motor vehicle in traffic	On-pavement (roadway)	(UNK)	(UNK)	(UNK)	(UNK)	2
										Passenger	North	Turning left	Motor vehicle in traffic	On-pavement (roadway)	(UNK)	(UNK)	(UNK)	(UNK)	1
81180614																			
3/22/2008 4:31 PM	Clear	Dry	0	0	0	0	11-Rear end	Daylight	126.11	Passenger	South	Straight ahead	Motor vehicle in traffic	On-pavement (roadway)	(UNK)	(UNK)	(UNK)	(UNK)	2
										Sport utility vehicle (SUV)	South	Straight ahead	Motor vehicle in traffic	On-pavement (roadway)	(UNK)	(UNK)	(UNK)	(UNK)	1
81559676																			
4/23/2008 8:55 PM	Clear	Wet	0	0	0	0	15-Angle	Darkness, lighted road	126.11	Sport utility vehicle (SUV)	North	Straight ahead	Motor vehicle in traffic	On-pavement (roadway)	(UNK)	(UNK)	(UNK)	(UNK)	2
										Passenger	East	Backing	Motor vehicle in traffic	On-pavement (roadway)	(UNK)	(UNK)	(UNK)	(UNK)	1
82601584																			
6/14/2008 3:19 AM	Clear	Dry	0	0	0	0	6-Fixed object	Darkness	126.11	Sport utility vehicle (SUV)	West	Unknown/N A	Ran off the roadway	On-pavement (roadway)	Guardrail face	On-pavement (roadway)	(UNK)	(UNK)	1
82370966																			
6/24/2008 11:08 AM	Clear	Dry	0	0	0	0	10-Turning	Daylight	126.11	Passenger	South	Slow/stop in traffic	Motor vehicle in traffic	On-pavement (roadway)	(UNK)	(UNK)	(UNK)	(UNK)	2
										Passenger	South	Turning left	Motor vehicle in traffic	On-pavement (roadway)	(UNK)	(UNK)	(UNK)	(UNK)	1

Collision Diagram

1/1/2008 to 12/31/2008

Crash Route: IL064 | From MileStation 126.11 to 126.11 | County : Cook | Intersection Related: Intersections | *See Notes at End of Report.

Date	Weather	Roadway	----- A	----- B1 fYg 6	----- C	Killed	Type of Crash	Light Condition	Mile	Vehicle Type	DIRP	Maneuver	Event 1	Loc 1	Event 2	Loc 2	Event 3	Loc 3	Unit
82357724																			
6/25/2008 7:15 PM	Clear	Dry	0	0	0	0	12-Sideswipe same direction	Daylight	126.11	Passenger	North	Slow/stop - left turn	Motor vehicle in traffic	On-pavement (roadway)	(UNK)	(UNK)	(UNK)	(UNK)	2
										Pickup	North	Slow/stop - left turn	Motor vehicle in traffic	On-pavement (roadway)	(UNK)	(UNK)	(UNK)	(UNK)	1
82390113																			
6/26/2008 8:59 AM	Clear	Dry	0	0	1	0	12-Sideswipe same direction	Daylight	126.11	Van/mini van	North	Slow/stop in traffic	Motor vehicle in traffic	On-pavement (roadway)	(UNK)	(UNK)	(UNK)	(UNK)	2
										Tractor w/ semi-trailer	North	Slow/stop - left turn	Motor vehicle in traffic	On-pavement (roadway)	(UNK)	(UNK)	(UNK)	(UNK)	1
82522988																			
6/27/2008 12:38 PM	Clear	Dry	0	3	0	0	6-Fixed object	Daylight	126.11	Passenger	South	Turning right	Ran off the roadway	Unknown	Other fixed object	Unknown	(UNK)	(UNK)	1
83547513																			
7/4/2008 6:21 AM	Rain	Wet	0	0	0	0	6-Fixed object	Dusk	126.11	Passenger	West	Straight ahead	Ran off the roadway	On-pavement (roadway)	Concrete med barrier	On-pavement (roadway)	(UNK)	(UNK)	1
82600933																			
7/6/2008 4:16 PM	Clear	Dry	0	0	0	0	10-Turning	Daylight	126.11	Passenger	East	Turning left	Motor vehicle in traffic	On-pavement (roadway)	(UNK)	(UNK)	(UNK)	(UNK)	2
										Passenger	South	Straight ahead	Motor vehicle in traffic	On-pavement (roadway)	(UNK)	(UNK)	(UNK)	(UNK)	1
82771775																			
7/21/2008 5:58 PM	Clear	Dry	0	0	0	0	11-Rear end	Daylight	126.11	Sport utility vehicle (SUV)	West	Backing	Motor vehicle in traffic	On-pavement (roadway)	(UNK)	(UNK)	(UNK)	(UNK)	1
										Passenger	West	Slow/stop in traffic	Motor vehicle in traffic	On-pavement (roadway)	(UNK)	(UNK)	(UNK)	(UNK)	2
82771817																			
7/22/2008 7:35 AM	Clear	Dry	0	0	0	0	11-Rear end	Daylight	126.11	Pickup	South	Slow/stop in traffic	Motor vehicle in traffic	On-pavement (roadway)	(UNK)	(UNK)	(UNK)	(UNK)	2
										Passenger	South	Changing lanes	Motor vehicle in traffic	On-pavement (roadway)	(UNK)	(UNK)	(UNK)	(UNK)	1

Collision Diagram

1/1/2008 to 12/31/2008

Crash Route: IL064 | From MileStation 126.11 to 126.11 | County : Cook | Intersection Related: Intersections | *See Notes at End of Report.

Date	Weather	Roadway	----- A	----- B 6	----- C	Killed	Type of Crash	Light Condition	Mile	Vehicle Type	DIRP	Maneuver	Event 1	Loc 1	Event 2	Loc 2	Event 3	Loc 3	Unit
82935628																			
8/6/2008 2:40 PM	Clear	Unknown	0	0	0	0	11-Rear end	Daylight	126.11	Van/mini van	West	Slow/stop in traffic	Motor vehicle in traffic	On-pavement (roadway)	(UNK)	(UNK)	(UNK)	(UNK)	4
										Pickup	West	Slow/stop in traffic	Motor vehicle in traffic	On-pavement (roadway)	(UNK)	(UNK)	(UNK)	(UNK)	3
										Passenger	West	Slow/stop in traffic	Motor vehicle in traffic	On-pavement (roadway)	(UNK)	(UNK)	(UNK)	(UNK)	2
										Van/mini van	West	Straight ahead	Motor vehicle in traffic	On-pavement (roadway)	(UNK)	(UNK)	(UNK)	(UNK)	1
83171199																			
8/6/2008 3:23 PM	Clear	Dry	0	3	0	0	11-Rear end	Daylight	126.11	Bus over 15 pass.	East	Slow/stop - load/unload	Motor vehicle in traffic	Intersection	(UNK)	(UNK)	(UNK)	(UNK)	3
										Passenger	East	Slow/stop in traffic	Motor vehicle in traffic	Intersection	(UNK)	(UNK)	(UNK)	(UNK)	2
										Van/mini van	East	Straight ahead	Motor vehicle in traffic	Intersection	(UNK)	(UNK)	(UNK)	(UNK)	1
83109223																			
8/14/2008 11:54 AM	Clear	Dry	0	1	0	0	10-Turning	Daylight	126.11	Passenger	North	Unknown/N A	Motor vehicle in traffic	On-pavement (roadway)	(UNK)	(UNK)	(UNK)	(UNK)	5
										Pickup	North	Slow/stop in traffic	Motor vehicle in traffic	On-pavement (roadway)	(UNK)	(UNK)	(UNK)	(UNK)	4
										Sport utility vehicle (SUV)	North	Slow/stop in traffic	Motor vehicle in traffic	On-pavement (roadway)	(UNK)	(UNK)	(UNK)	(UNK)	3
										Sport utility vehicle (SUV)	South	Turning left	Motor vehicle in traffic	On-pavement (roadway)	(UNK)	(UNK)	(UNK)	(UNK)	2
										Passenger	East	Straight ahead	Motor vehicle in traffic	On-pavement (roadway)	(UNK)	(UNK)	(UNK)	(UNK)	1
83245944																			
8/18/2008 8:14 PM	Clear	Dry	0	2	0	0	10-Turning	Darkness, lighted road	126.11	Passenger	West	Straight ahead	Motor vehicle in traffic	Intersection	(UNK)	(UNK)	(UNK)	(UNK)	1
										Sport utility vehicle (SUV)	East	Turning left	Motor vehicle in traffic	Intersection	(UNK)	(UNK)	(UNK)	(UNK)	2

Collision Diagram

1/1/2008 to 12/31/2008

Crash Route: IL064 | From MileStation 126.11 to 126.11 | County : Cook | Intersection Related: Intersections | *See Notes at End of Report.

Date	Weather	Roadway	----- A	----- B	----- C	Killed	Type of Crash	Light Condition	Mile	Vehicle Type	DIRP	Maneuver	Event 1	Loc 1	Event 2	Loc 2	Event 3	Loc 3	Unit
83245860																			
8/19/2008 4:14 PM	Clear	Dry	0	0	0	0	10-Turning	Daylight	126.11	Passenger	North	Turning left	Motor vehicle in traffic	On-pavement (roadway)	(UNK)	(UNK)	(UNK)	(UNK)	2
										Passenger	South	Straight ahead	Motor vehicle in traffic	On-pavement (roadway)	(UNK)	(UNK)	(UNK)	(UNK)	1
83345033																			
8/20/2008 3:09 PM	Clear	Dry	0	0	0	0	11-Rear end	Daylight	126.11	Passenger	Southwest	Slow/stop - right turn	Motor vehicle in traffic	On-pavement (roadway)	(UNK)	(UNK)	(UNK)	(UNK)	2
										Pickup	Southwest	Slow/stop - right turn	Motor vehicle in traffic	On-pavement (roadway)	(UNK)	(UNK)	(UNK)	(UNK)	1
83547489																			
9/13/2008 12:21 PM	Rain	Wet	0	0	0	0	10-Turning	Daylight	126.11	Sport utility vehicle (SUV)	East	Straight ahead	Motor vehicle in traffic	On-pavement (roadway)	(UNK)	(UNK)	(UNK)	(UNK)	2
										Sport utility vehicle (SUV)	West	Turning left	Motor vehicle in traffic	On-pavement (roadway)	(UNK)	(UNK)	(UNK)	(UNK)	1
83582080																			
9/24/2008 7:55 PM	Rain	Wet	0	0	0	0	6-Fixed object	Darkness, lighted road	126.11	Passenger	North	Slow/stop in traffic	Motor vehicle in traffic	On-pavement (roadway)	(UNK)	(UNK)	(UNK)	(UNK)	2
										Sport utility vehicle (SUV)	South	Skidding/control loss	Ran off the roadway	Other	Concrete med barrier	Other	Motor vehicle in traffic	On-pavement (roadway)	1
83676676																			
9/25/2008 4:00 PM	Clear	Dry	0	0	0	0	10-Turning	Daylight	126.11	Sport utility vehicle (SUV)	East	Straight ahead	Motor vehicle in traffic	On-pavement (roadway)	(UNK)	(UNK)	(UNK)	(UNK)	2
										Sport utility vehicle (SUV)	South	Turning left	Motor vehicle in traffic	On-pavement (roadway)	(UNK)	(UNK)	(UNK)	(UNK)	1
83810713																			
10/7/2008 9:55 AM	Clear	Dry	0	0	0	0	11-Rear end	Daylight	126.11	Sport utility vehicle (SUV)	North	Straight ahead	Motor vehicle in traffic	Intersection	(UNK)	(UNK)	(UNK)	(UNK)	2
										Sport utility vehicle (SUV)	North	Straight ahead	Motor vehicle in traffic	Intersection	(UNK)	(UNK)	(UNK)	(UNK)	1

Collision Diagram

1/1/2008 to 12/31/2008

Crash Route: IL064 | From MileStation 126.11 to 126.11 | County : Cook | Intersection Related: Intersections | *See Notes at End of Report.

Date	Weather	Roadway	----- A	----- B1 f]Yg 6	----- C	Killed	Type of Crash	Light Condition	Mile	Vehicle Type	DIRP	Maneuver	Event 1	Loc 1	Event 2	Loc 2	Event 3	Loc 3	Unit
83810580																			
10/7/2008 2:00 PM	Clear	Dry	0	0	0	0	7-Other object	Daylight	126.11	Passenger	North	Straight ahead	Other object	On-pavement (roadway)	(UNK)	(UNK)	(UNK)	(UNK)	1
83810341																			
10/8/2008 2:40 PM	Clear	Dry	0	0	0	0	11-Rear end	Daylight	126.11	Sport utility vehicle (SUV)	West	Slow/stop in traffic	Motor vehicle in traffic	On-pavement (roadway)	(UNK)	(UNK)	(UNK)	(UNK)	2
										Passenger	West	Straight ahead	Motor vehicle in traffic	On-pavement (roadway)	(UNK)	(UNK)	(UNK)	(UNK)	1
84311182																			
10/31/2008 3:10 PM	Clear	Unknown	0	0	0	0	10-Turning	Daylight	126.11	Passenger	Unknown	Straight ahead	Motor vehicle in traffic	On-pavement (roadway)	(UNK)	(UNK)	(UNK)	(UNK)	2
										Passenger	Unknown	Turning left	Motor vehicle in traffic	On-pavement (roadway)	(UNK)	(UNK)	(UNK)	(UNK)	1
84311638																			
11/1/2008 6:44 AM	Clear	Dry	0	0	0	0	11-Rear end	Dawn	126.11	Passenger	West	Straight ahead	Motor vehicle in traffic	On-pavement (roadway)	(UNK)	(UNK)	(UNK)	(UNK)	2
										Passenger	West	Straight ahead	Motor vehicle in traffic	On-pavement (roadway)	(UNK)	(UNK)	(UNK)	(UNK)	1
84416056																			
11/12/2008 8:53 AM	Rain	Wet	0	0	0	0	11-Rear end	Daylight	126.11	Passenger	East	Straight ahead	Motor vehicle in traffic	On-pavement (roadway)	(UNK)	(UNK)	(UNK)	(UNK)	2
										Tractor w/ semi-trailer	East	Straight ahead	Motor vehicle in traffic	On-pavement (roadway)	(UNK)	(UNK)	(UNK)	(UNK)	1
84883842																			
12/17/2008 7:47 PM	Clear	Dry	0	0	0	0	11-Rear end	Darkness, lighted road	126.11	Sport utility vehicle (SUV)	North	Straight ahead	Motor vehicle in traffic	On-pavement (roadway)	(UNK)	(UNK)	(UNK)	(UNK)	2
										Passenger	North	Straight ahead	Motor vehicle in traffic	On-pavement (roadway)	(UNK)	(UNK)	(UNK)	(UNK)	1
84919141																			
12/19/2008 9:09 PM	Snow	Snow or slush	0	0	0	0	11-Rear end	Darkness	126.11	Sport utility vehicle (SUV)	North	Slow/stop in traffic	Motor vehicle in traffic	On-pavement (roadway)	(UNK)	(UNK)	(UNK)	(UNK)	2

Collision Diagram

1/1/2008 to 12/31/2008

Crash Route: IL064 | From MileStation 126.11 to 126.11 | County : Cook | Intersection Related: Intersections | *See Notes at End of Report.

Date	Weather	Roadway	----- A	----- B	----- C	Killed	Type of Crash	Light Condition	Mile	Vehicle Type	DIRP	Maneuver	Event 1	Loc 1	Event 2	Loc 2	Event 3	Loc 3	Unit
12/19/2008 9:09 PM	Snow	Snow or slush	0	0	0	0	11-Rear end	Darkness	126.11	Passenger	North	Skidding/control loss	Motor vehicle in traffic	On-pavement (roadway)	(UNK)	(UNK)	(UNK)	(UNK)	1
84991058																			
12/21/2008 10:50 AM	Snow	Snow or slush	0	0	0	0	12-Sideswipe same direction	Daylight	126.11	Sport utility vehicle (SUV)	East	Straight ahead	Motor vehicle in traffic	On-pavement (roadway)	(UNK)	(UNK)	(UNK)	(UNK)	2
										Passenger	East	Merging	Motor vehicle in traffic	On-pavement (roadway)	(UNK)	(UNK)	(UNK)	(UNK)	1
85204220																			
12/30/2008 4:30 PM	Clear	Dry	0	0	0	0	8-Other non collision	Daylight	126.11	Passenger	West	Straight ahead	Other non-collision	On-pavement (roadway)	(UNK)	(UNK)	(UNK)	(UNK)	1

Collision Diagram

1/1/2008 to 12/31/2008

Crash Route: IL064 | From MileStation 126.11 to 126.11 | County : Cook | Intersection Related: Intersections | *See Notes at End of Report.

TOTAL CRASHES	FATAL CRASHES	INJURY CRASHES	PROPERTY DAMAGE CRASHES	TOTAL KILLED	TOTAL INJURED	A INJURIES	B INJURIES	C INJURIES
<u>39</u>	<u>0</u>	<u>6</u>	<u>33</u>	<u>0</u>	<u>12</u>	<u>0</u>	<u>11</u>	<u>1</u>

Type of Crash	Total	%	Day of Wk	Total	%	Hour of Day	Total	%	Vehicle Type	Total	%
10-Turning	11	28.2%	Monday	3	7.7%	03 AM	1	2.6%	Bus over 15 pass.	1	1.3%
11-Rear end	15	38.5%	Tuesday	7	17.9%	06 AM	2	5.1%	Passenger	44	56.4%
12-Sideswipe same direction	5	12.8%	Wednesday	10	25.6%	07 AM	1	2.6%	Pickup	5	6.4%
15-Angle	1	2.6%	Thursday	5	12.8%	08 AM	2	5.1%	Sport utility vehicle (SUV)	21	26.9%
6-Fixed object	4	10.3%	Friday	6	15.4%	09 AM	1	2.6%	Tractor w/ semi-trailer	3	3.8%
7-Other object	1	2.6%	Saturday	5	12.8%	10 AM	1	2.6%	Van/mini van	4	5.1%
8-Other non collision	2	5.1%	Sunday	3	7.7%	11 AM	4	10.3%	TOTAL:	78	
TOTAL:	39		TOTAL:	39		Noon	3	7.7%			
						2 PM	4	10.3%			
						3 PM	3	7.7%			
						4 PM	5	12.8%			
						5 PM	2	5.1%			
						7 PM	5	12.8%			
						8 PM	2	5.1%			
						9 PM	2	5.1%			
						10 PM	1	2.6%			
						TOTAL:	39				

Weather Cond	Total	%	Light Cond	Total	%	Road Surface	Total	%	DIRP	Total	%
Clear	29	74.4%	Darkness	4	10.3%	Dry	26	66.7%	East	15	19.2%
Rain	6	15.4%	Darkness, lighted road	7	17.9%	Snow or slush	3	7.7%	North	20	25.6%

Collision Diagram

1/1/2008 to 12/31/2008

Crash Route: IL064 | From MileStation 126.11 to 126.11 | County : Cook | Intersection Related: Intersections | *See Notes at End of Report.

<i>Weather Cond</i>	<i>Total</i>	<i>%</i>	<i>Light Cond</i>	<i>Total</i>	<i>%</i>	<i>Road Surface</i>	<i>Total</i>	<i>%</i>	<i>DIRP</i>	<i>Total</i>	<i>%</i>
Sleet/hail	1	2.6%	Dawn	1	2.6%	Unknown	4	10.3%	South	16	20.5%
Snow	3	7.7%	Daylight	25	64.1%	Wet	6	15.4%	Southwest	4	5.1%
TOTAL:	39		Dusk	2	5.1%	TOTAL:	39		Unknown	2	2.6%
			TOTAL:	39					West	21	26.9%
									TOTAL:	78	



Collision Diagram

1/1/2008 to 12/31/2008

Crash Route: IL064 | From MileStation 126.11 to 126.11 | County : Cook | Intersection Related: Intersections | *See Notes at End of Report.

Notes

Current year and previous year data are not yet complete and are subject to change as more information becomes available. Calendar date selections include data based on the date of the crash. Year selections include data based on the statistical year in which the crash was processed.

The intersection-related field could be incorrect and affect the data on the report.

If a crash occurs between two municipalities, it may be coded to another city/county from what is on the crash report.

Crashes with incomplete location information are not included.

Areas where routes have more than one junction have been known to cause problems in determining accurate locations. Please notify us to verify the data for intersections with more than one junction.

For roadway segments which include the intersection of two routes, the intersection report may need to be run on the other route in order to get all the crashes.

Traffic Volume

25th Ave and North Ave ADT August 2010

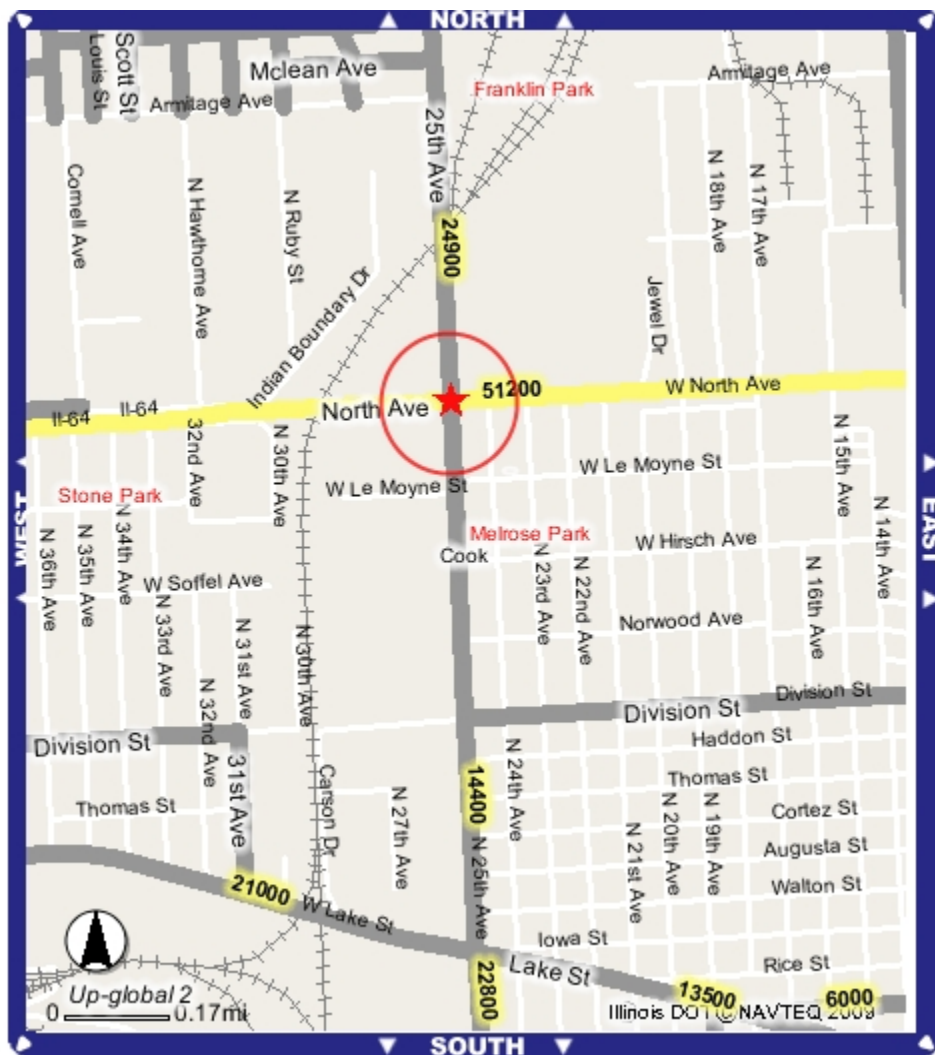
The traffic numbers below were obtained from the IDOT website per the RLR Guideline document published by IDOT. Only ADT values were available, peak numbers were not provided.

25th Ave ADT

- North: 24,900
- South: 14,400

North Ave ADT

- East: 51,200
- West: 51,200



25th Ave and North Ave ADT September 2012

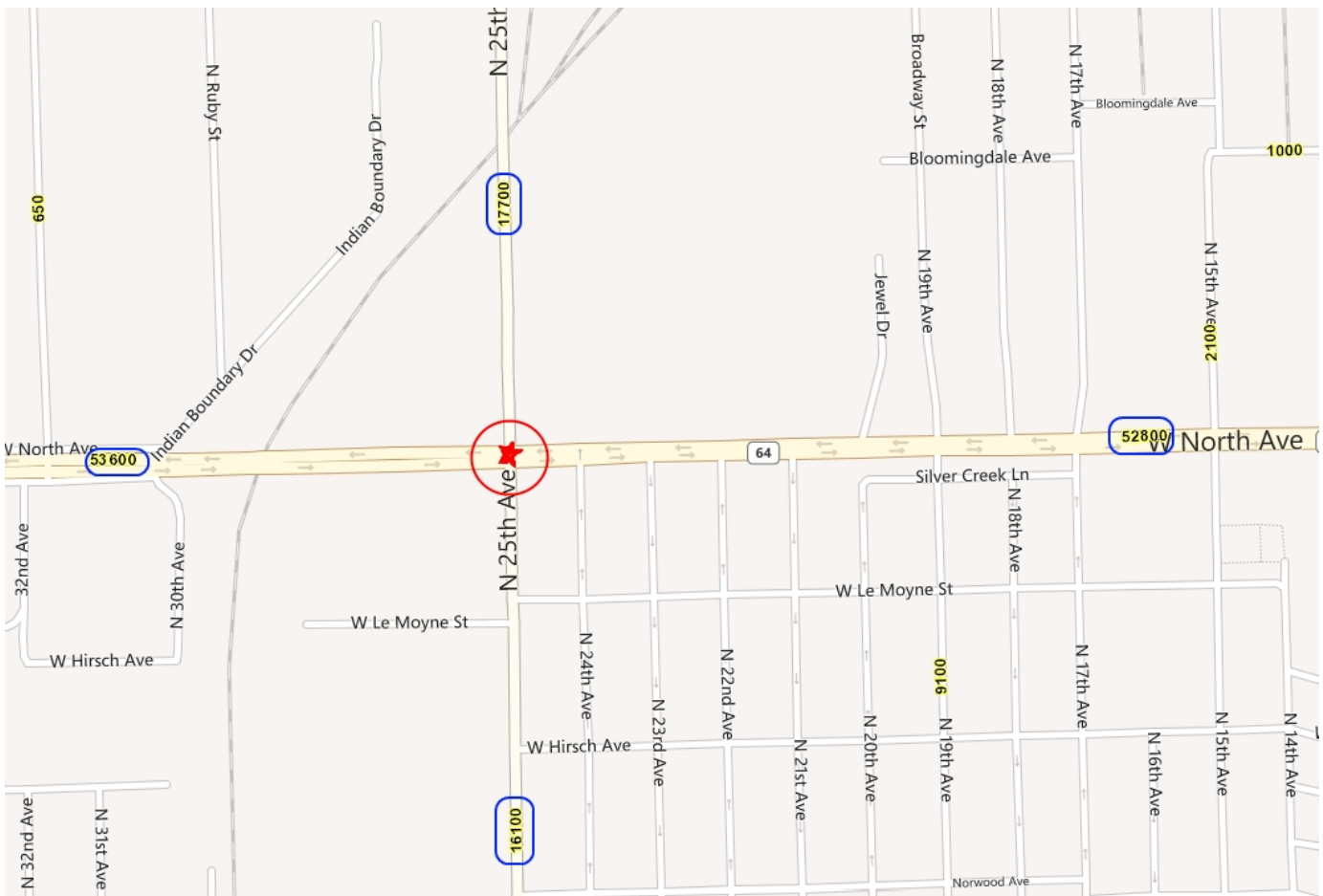
The traffic numbers below were obtained from the IDOT website per the RLR Guideline document published by IDOT. Only ADT values were available, peak numbers were not provided.

25th Ave ADT

- North: 17,700
- South: 16,100

North Ave ADT

- East: 52,800
- West: 53,600



25th Ave and North Ave ADT August 2014

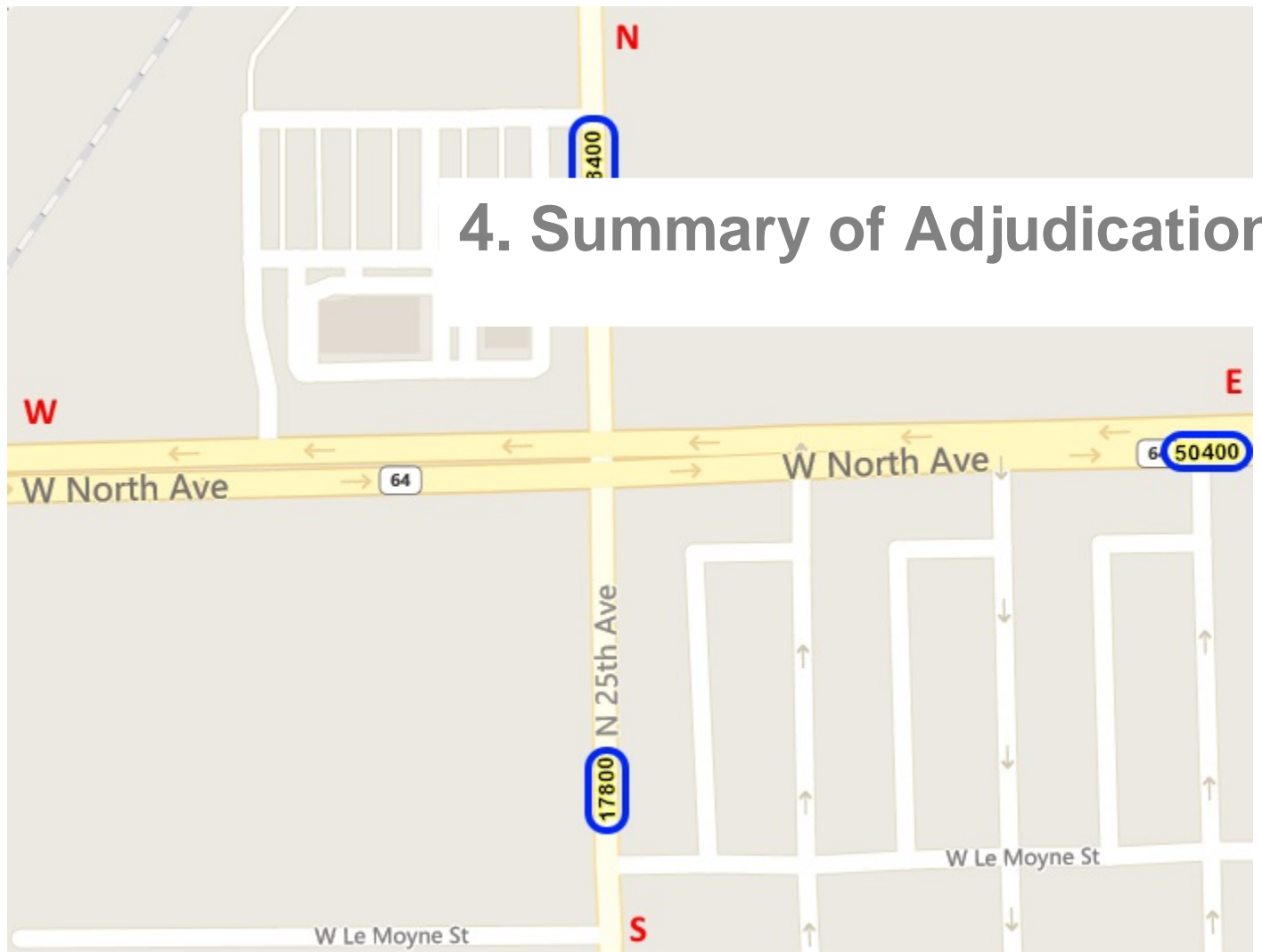
The traffic numbers below were obtained from the IDOT website per the RLR Guideline document published by IDOT. Only ADT values were available, peak numbers were not provided.

25th Ave ADT

- North: 18,400
- South: 17,800

North Ave ADT

- East: 50,400
- West: 50,400



Summary

All processes are in compliance with the RLR regulations laid out by the Illinois Department of Transportation District 1 Bureau of Traffic Operations.

The Village of **Melrose Park** received approval to install RLR cameras at the intersection of 25th Ave and North Ave in 2010.

- Date of RLR camera implementation on Eastbound: **12/17/2010**
- Date of RLR camera implementation on Westbound: **12/21/2010**
- Date of RLR camera implementation on Southbound: **12/17/2010**
- Date at which the 1 Year Follow-Up Evaluation Report was submitted to IDOT: **10/04/2012**

There have been no Signal timing (or any other settings of Traffic Controller) changes.

The intersection of 25th Ave and North Ave is one of the busiest and most dangerous intersections in Melrose Park. After analyzing all of the available data, we believe that the RLR cameras currently in operation at the intersection of 25th Ave and North Ave in the **Village of Melrose Park** are making a contribution toward improved traffic safety at this location. Total crashes have been trending down little by little since the RLR cameras were installed. (39 in 2008 -> 22 in 2011 -> 17 in 2014) This reduction has occurred in spite of high traffic volumes over an 8 year period. (North Ave has over 50,000 cars which pass through this intersection daily) The crash data from the most recent available year 2014 showed the lowest total crash rate over the entire scope of the traffic safety program with 17 accidents.